

Monte-Carlo - Le Balmoral - Magnificent Duplex view Port of Monaco - private Pool

Rental Monaco

110 000 € / month

| | | | |
|--------------|-----------------------|--------------|-------------|
| Product type | Duplex | Num rooms | 4 |
| Total area | 375.53 m ² | Num bedrooms | 3 |
| Living area | 212.73 m ² | Num parking | 3 |
| Terrace area | 162.80 m ² | Num cellars | 1 |
| Condition | Luxurious amenities | District | Monte-Carlo |
| Floor | 1 | City | Monaco |

Monte Carlo, in a prestigious residence "Belle Epoque" style, with direct access to the Hotel Hermitage Monte-Carlo, magnificent duplex apartment resolutely contemporary offering exceptional volumes thanks to a double ceiling height. It is located on the 1st floor and has a living area of 212.73 sqm and 162.80 sqm of terraces enjoying an extraordinary view of the Port of Monaco as well as a swimming pool.

It consists on the lower floor of an entrance hall with dressing room and guest toilet, a majestic living room opening onto beautiful windows overlooking the Port of Monaco and a garden with swimming pool, an equipped kitchen, an en suite bedroom with bath and shower, as well as a service room with full shower room.

The upper floor (mezzanine) consists of an entrance hall with cloakroom and guest toilet, an office and two en suite bedrooms each with their own bath and shower.

3 car parks and 1 cellar.



Monte-Carlo - Le Balmoral - Magnificent Duplex view Port of Monaco - private Pool



- RESIDENCE HOTELIERE BALMORAL -

Appartement 2 - Nbr 0 et terrasse Nbr 1

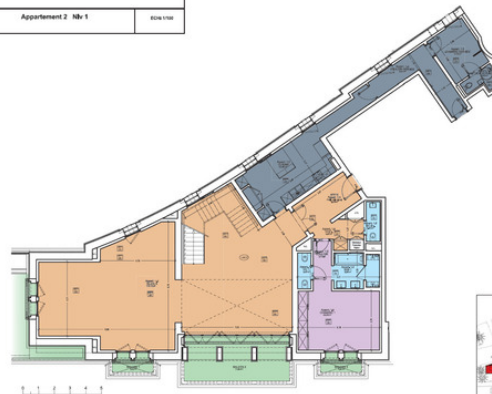


| SURFACES | |
|-------------------------|-----------------------|
| TOTAL MISEAU 0 | 24,00 m ² |
| TOTAL MISEAU 1 | 195,00 m ² |
| TOTAL MISEAU 2 | 195,00 m ² |
| TOTAL MISEAU | 414,00 m ² |
| TERRASSE BALCON Nbr 0 | 19,00 m ² |
| BALCON Nbr 1 | 8,00 m ² |
| LOCALS TECHNIQUES Nbr 0 | 41,00 m ² |



- RESIDENCE HOTELIERE BALMORAL -

Appartement 2 - Nbr 1

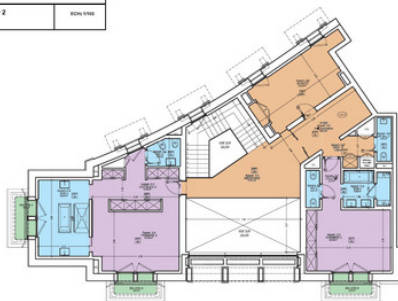


| SURFACES | |
|-------------------------|-----------------------|
| TOTAL MISEAU 0 | 24,00 m ² |
| TOTAL MISEAU 1 | 195,00 m ² |
| TOTAL MISEAU 2 | 195,00 m ² |
| TOTAL MISEAU | 414,00 m ² |
| TERRASSE BALCON Nbr 0 | 19,00 m ² |
| BALCON Nbr 1 | 8,00 m ² |
| LOCALS TECHNIQUES Nbr 0 | 41,00 m ² |



- RESIDENCE HOTELIERE BALMORAL -

Appartement 2 - Nbr 2



| SURFACES | |
|-------------------------|-----------------------|
| TOTAL MISEAU 0 | 24,00 m ² |
| TOTAL MISEAU 1 | 195,00 m ² |
| TOTAL MISEAU 2 | 195,00 m ² |
| TOTAL MISEAU | 414,00 m ² |
| TERRASSE BALCON Nbr 0 | 19,00 m ² |
| BALCON Nbr 1 | 8,00 m ² |
| LOCALS TECHNIQUES Nbr 0 | 41,00 m ² |

