

34.300€/M² - VILLA D NUVOLA À LA CONDAMINE

For sale Monaco

Sole agent

28 000 000 €

Monaco living in style and serenity!

This sensational villa located in the historic district of the Port and Le Condamine, exudes contemporary style and space. With architectural design of a Mediterranean riad, this property offers a zen-like garden that is surrounded and overlooked by the primary rooms. It is also an opportunity to enjoy your own personal pool located on the top floor. The property also benefits from 2 parking spaces.

The villa comprises as follows:

Lower Ground Floor: Master Suite offering; Master Bedroom, Dressing Room, His & Her Bathrooms and Dressing Room

Ground Floor: Entrance Hall, Storage, Elevator and Stairs leading to the Upper Floors

First Floor: Bedroom, Dressing Room, En-Suite Bathroom, Terraces, Elevator and Stairs

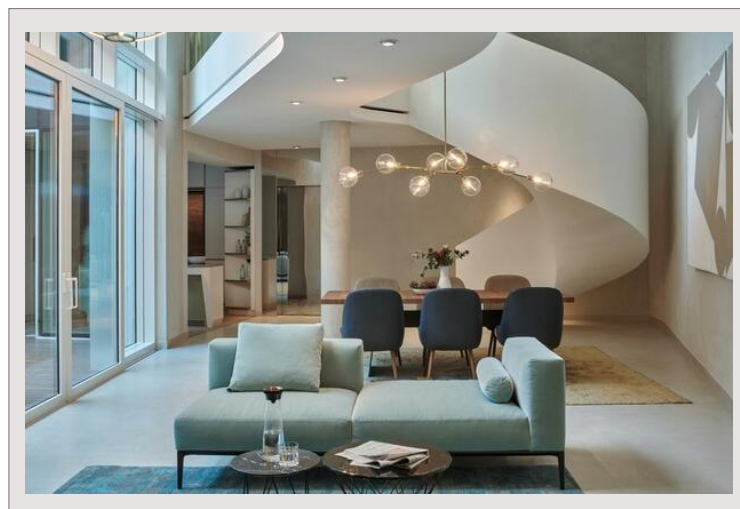
Second Floor: Bedroom, Dressing Room, En-Suite Bathroom, Terraces, Elevator and Stairs

Top Floor: Roof Terrace and Private Pool

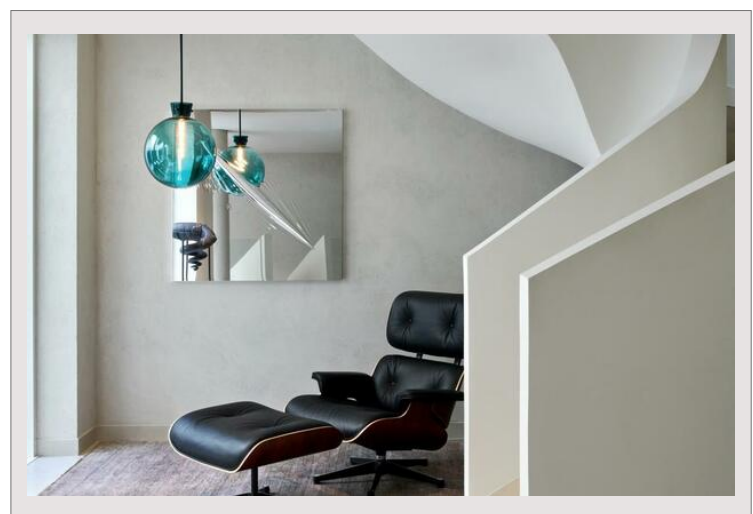
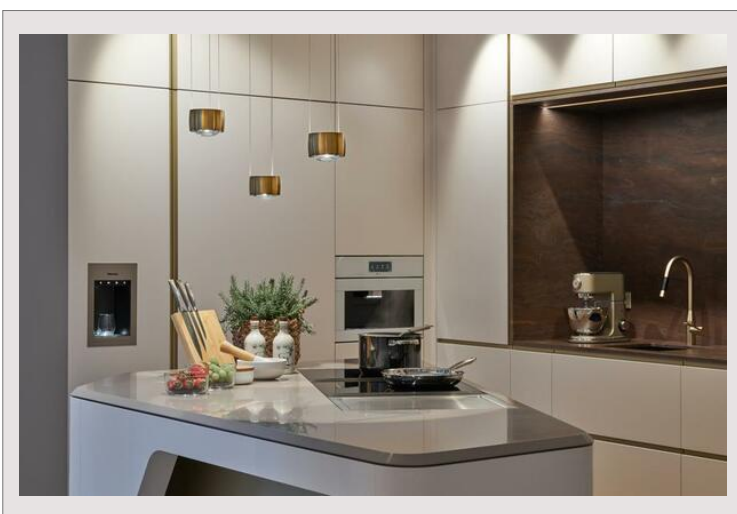
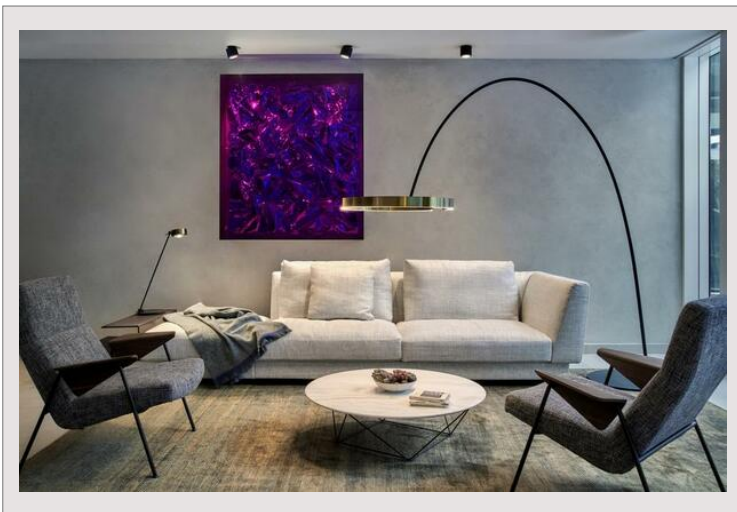
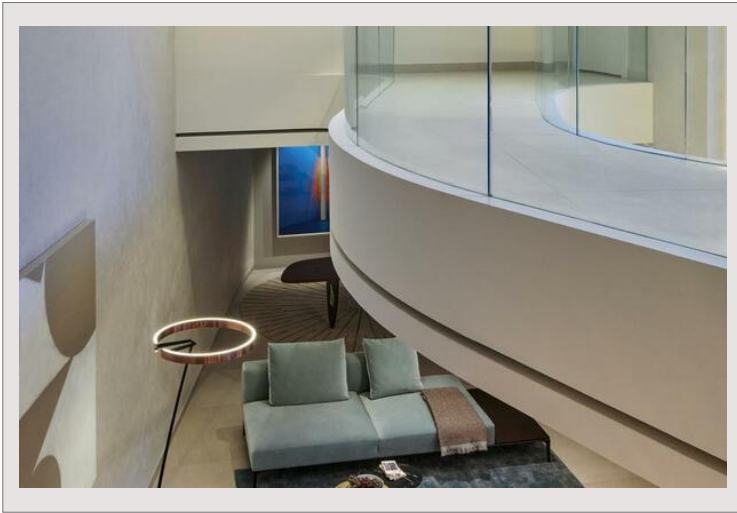
The villa is currently rented until 30.09.2030 for a monthly rent of 36.050 € HT.

Furnished by Lenz Werk Monaco

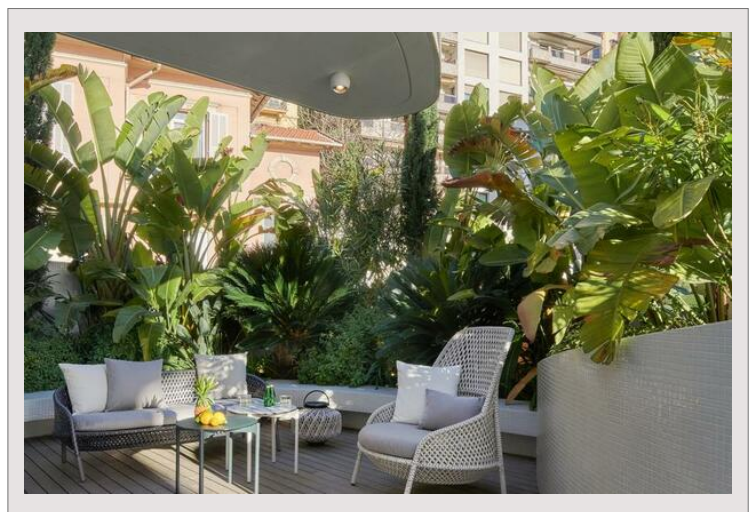
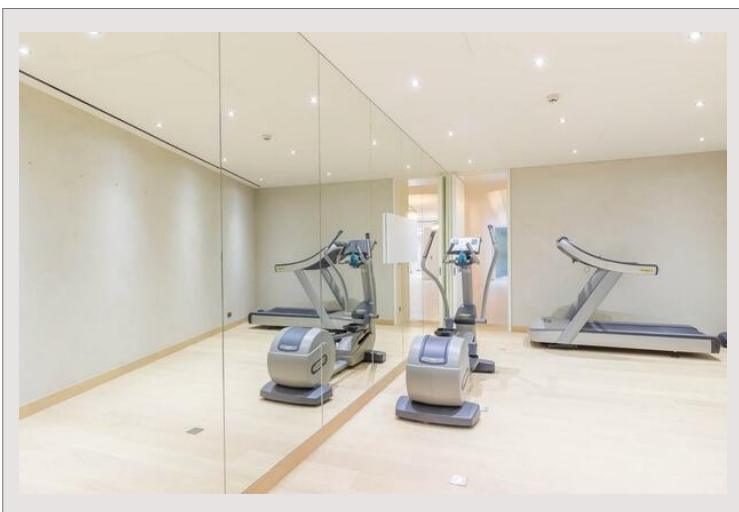
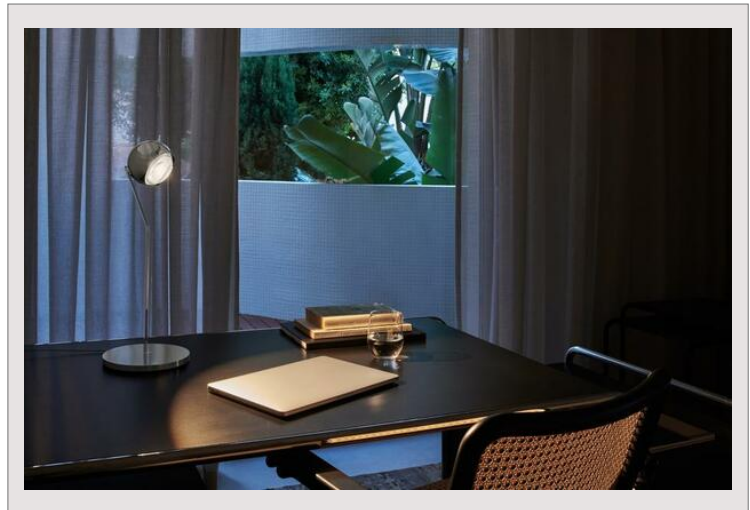
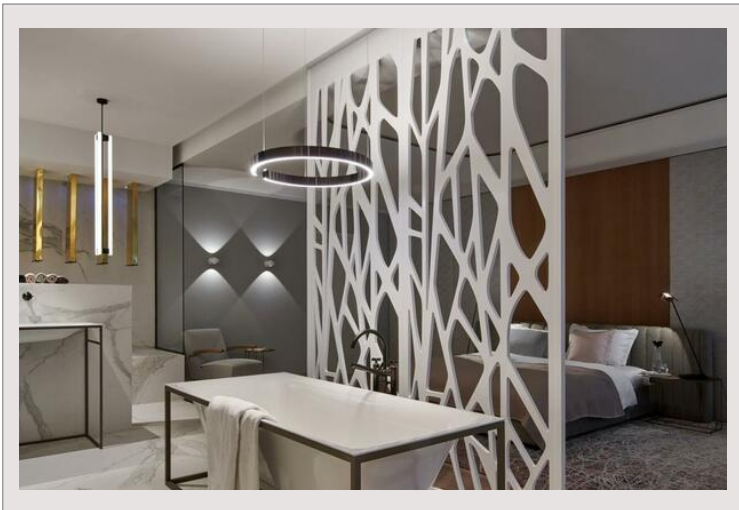
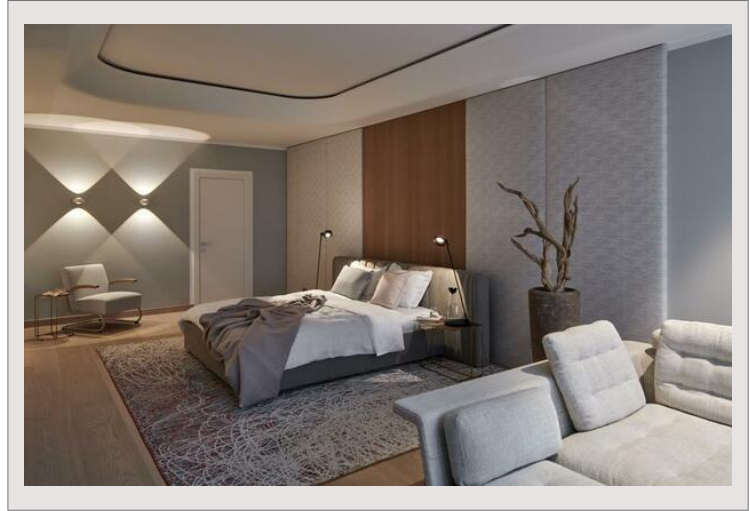
Total area	799 m ²	Num rooms	5
Living area	718 m ²	Num bedrooms	3
Terrace area	81 m ²	Num parking	2
		City	Monaco



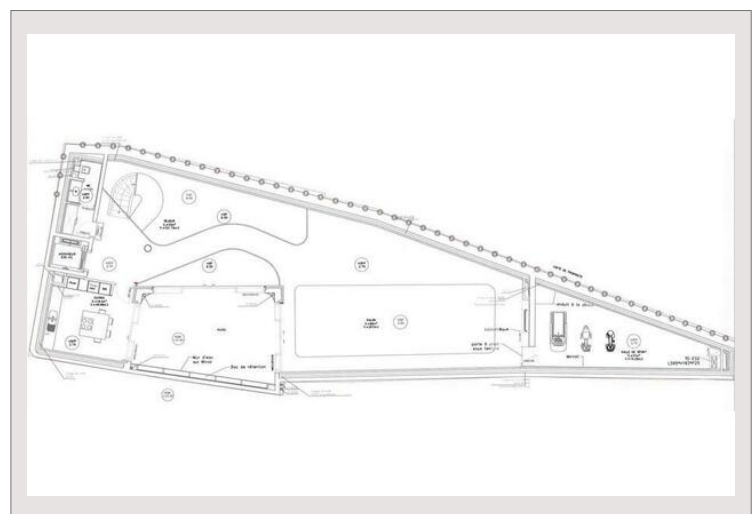
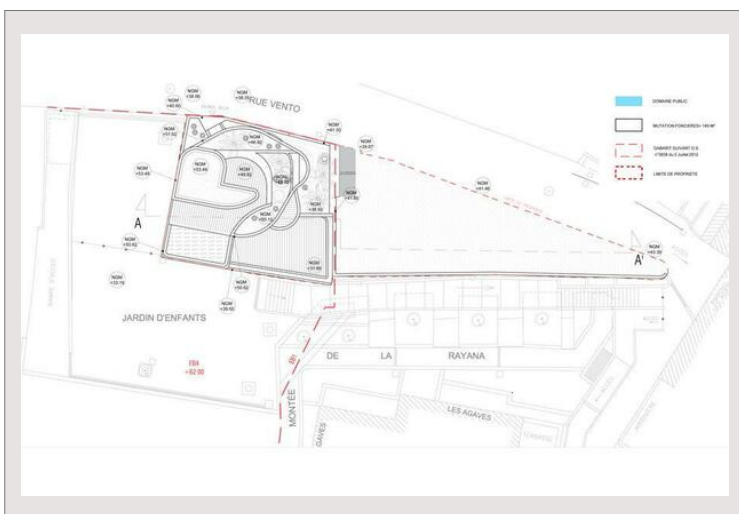
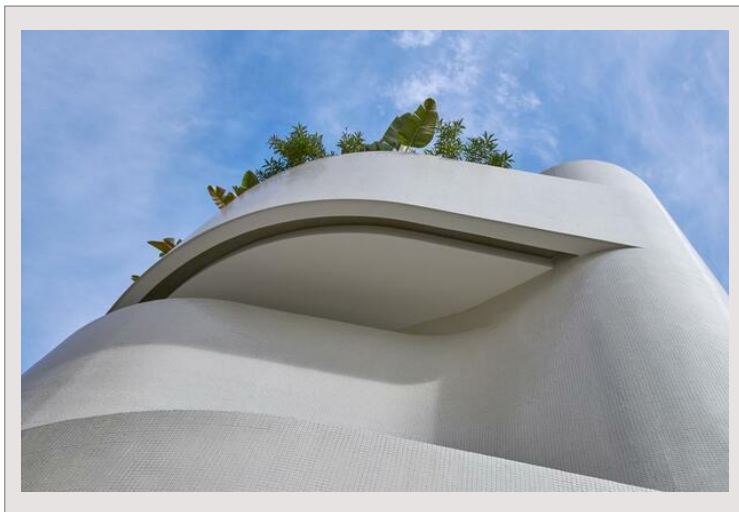
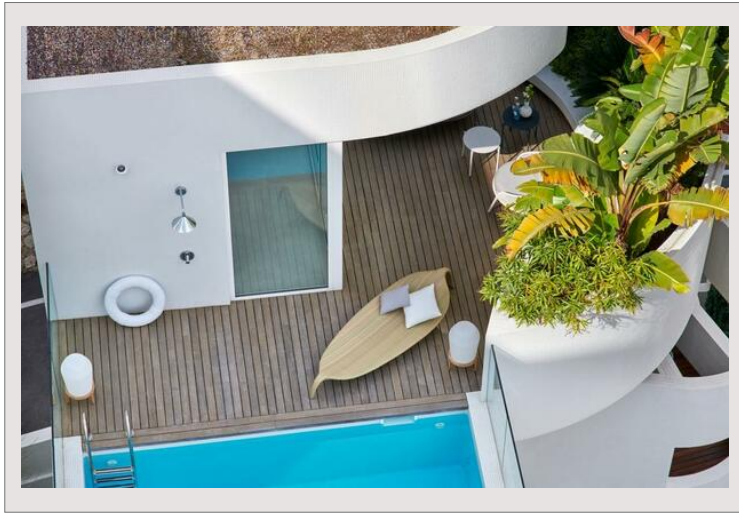
34.300€/M² - VILLA D NUVOLA À LA CONDAMINE



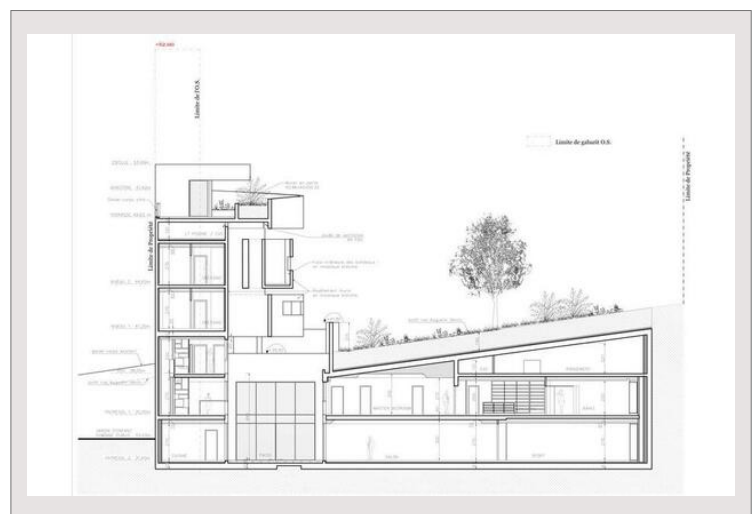
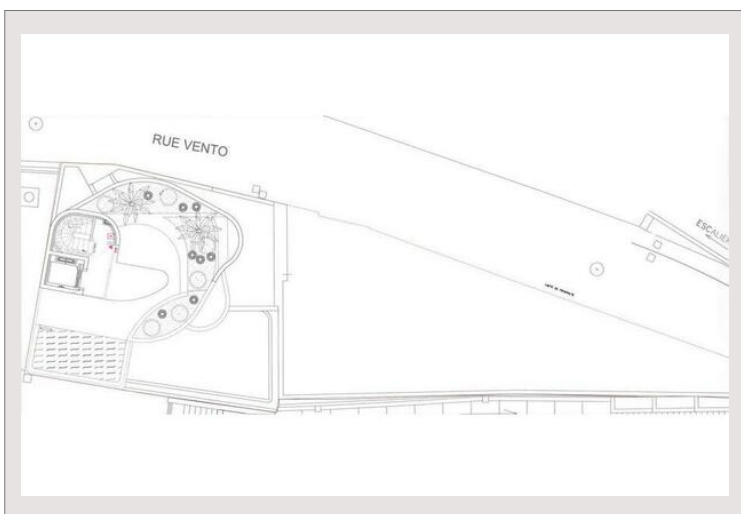
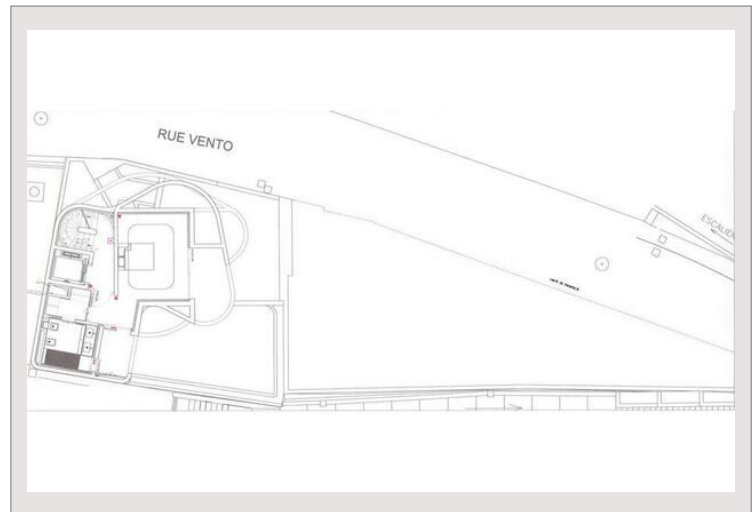
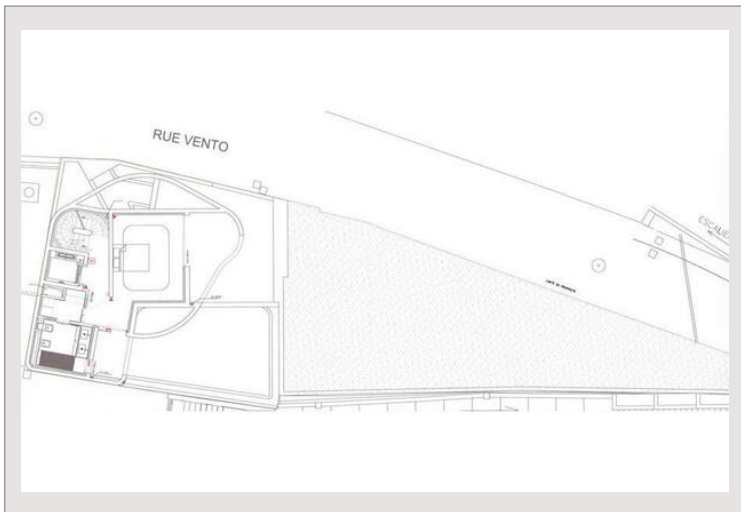
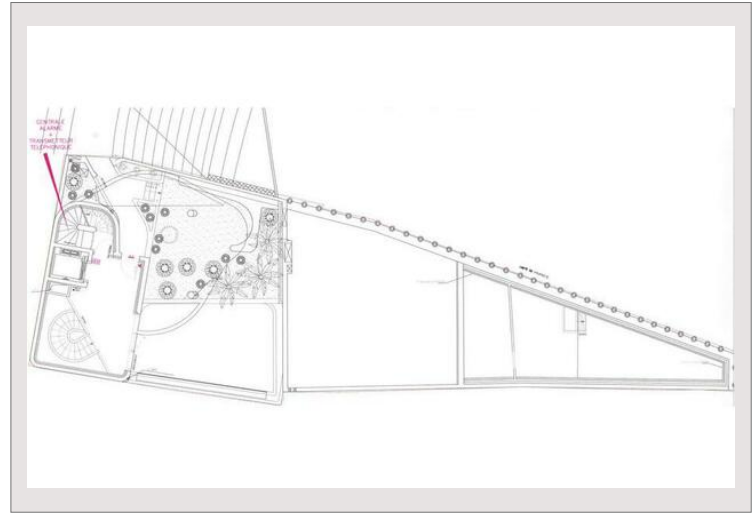
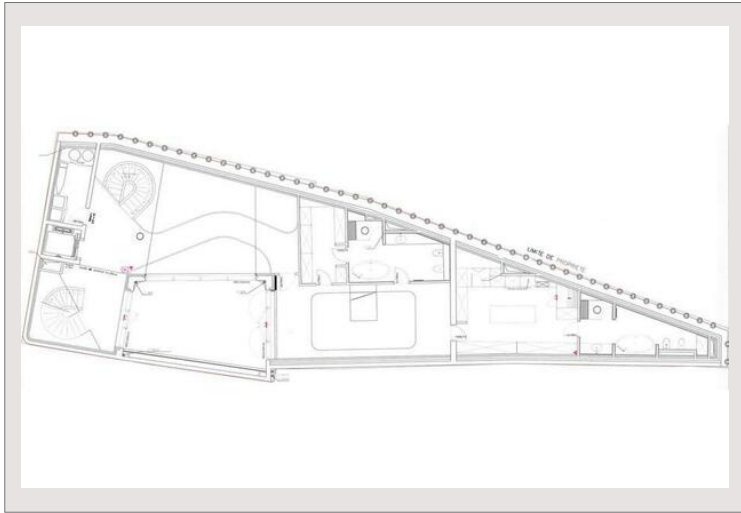
34.300€/M² - VILLA D NUVOLA À LA CONDAMINE



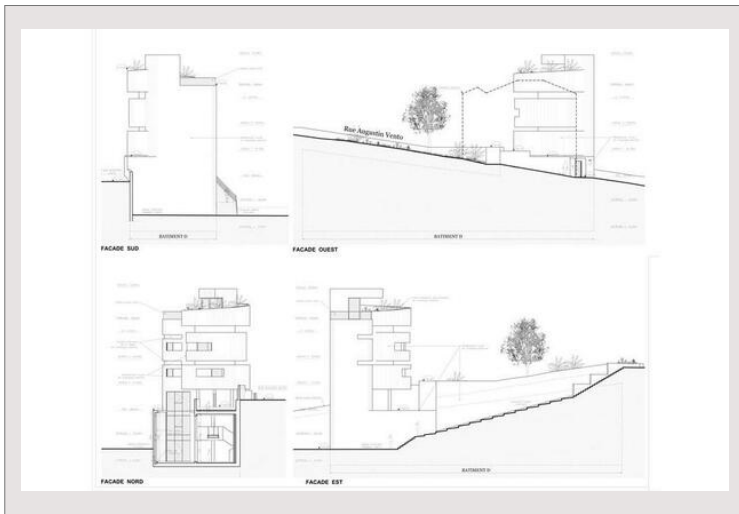
34.300€/M² - VILLA D NUVOLA À LA CONDAMINE



34.300€/M² - VILLA D NUVOLA À LA CONDAMINE



34.300€/M² - VILLA D NUVOLA À LA CONDAMINE



NUVOLA | Récapitulatif des Surfaces - Floor area schedule

Entresol 2 / Lower Level 2	269 m ²
Entresol 1 / Lower Level 1	197 m ²
Rez-de-Chaussée / Ground Floor	120 m ²
Premier étage / First Floor	67 m ²
Deuxième étage / Second Floor	65 m ²
Toit Terrasse / Roof Terrace	81 m ²
TOTAL - Total Floor Areas	799 m²