

**WINTER PALACE - Carré d'Or - Duplex Penthouse with Exceptional
Renovation Potential
For sale Monaco **Co-exclusive** 10 350 000 €**

In the heart of the Carré d'Or, facing the Casino Gardens, this duplex penthouse for renovation enjoys a highly sought-after location. Offering 136 sqm of living space extended by 126.60 sqm of outdoor areas, it presents significant redevelopment potential with the possibility of being converted into a four-room apartment. Located within the Winter Palace, an elegant bourgeois residence, it represents a rare opportunity in Monaco's most prestigious district.

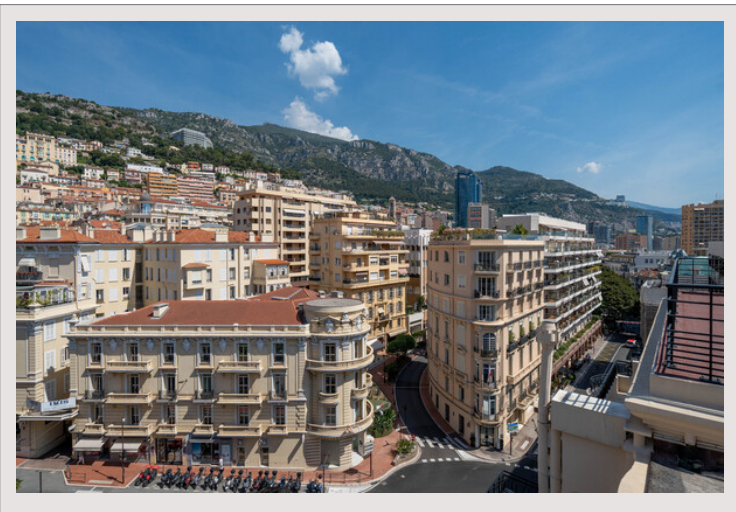
Product type	Penthouse/Roof	Num rooms	3
Total area	262.60 m ²	Num bedrooms	2
Living area	136 m ²	Building	Winter Palace
Terrace area	126.60 m ²	District	Carré d'Or
View	City & Mountains	Exposure	North-West
Condition	Work required	Floor	6
Release date	Libre	Usage mixte	Yes

In need of complete renovation, this duplex penthouse offers a total surface area of 262.60 sqm spread across two levels.

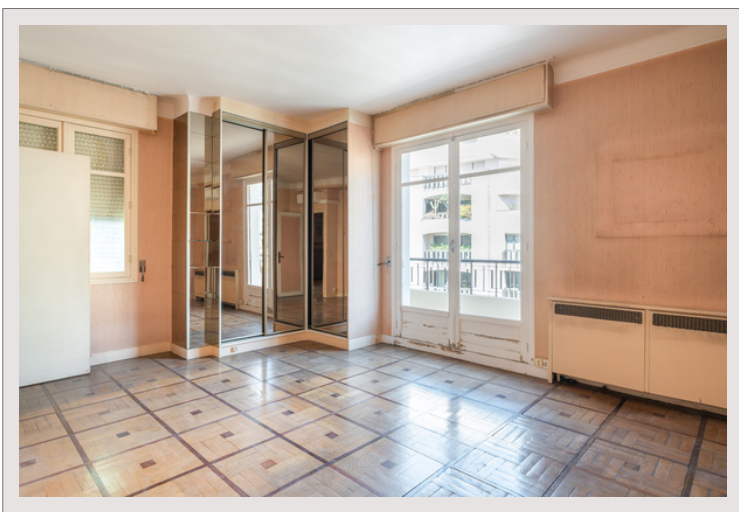
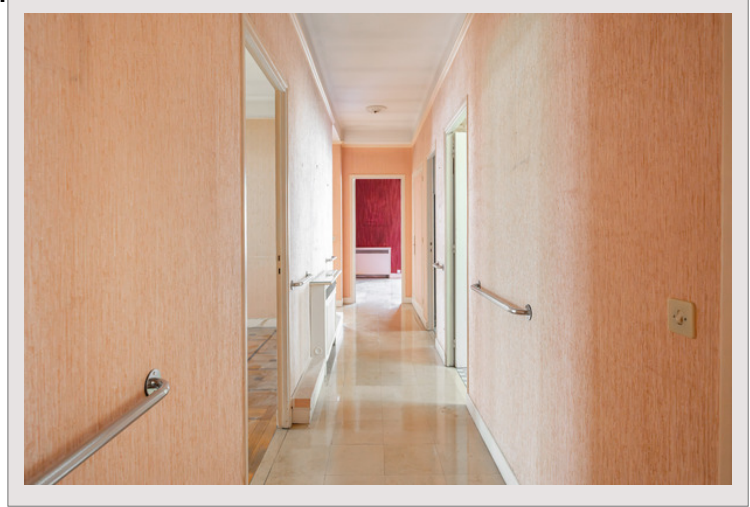
The sixth floor features a bright living room, a separate kitchen, two bedrooms and two bathrooms. This level offers 123.70 sqm of living space together with 27.60 sqm of outdoor areas.

The upper level includes 12.30 sqm of interior space opening onto a vast 99 sqm rooftop terrace fitted with an outdoor kitchen. This exceptional outdoor area in the heart of the Carré d'Or offers a rare lifestyle setting and numerous design possibilities.

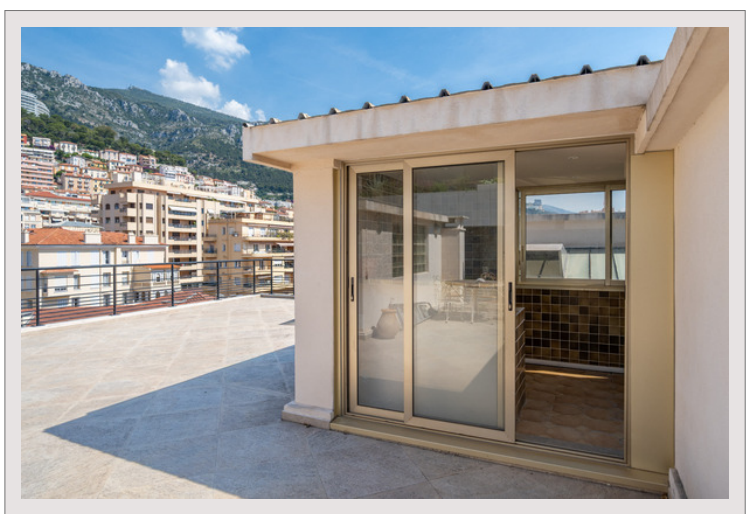
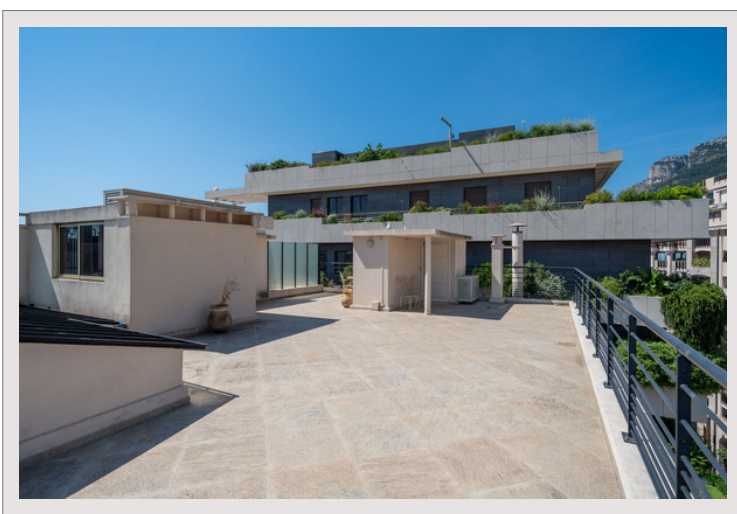
A unique opportunity to create a bespoke residence in one of the Principality's most desirable addresses.



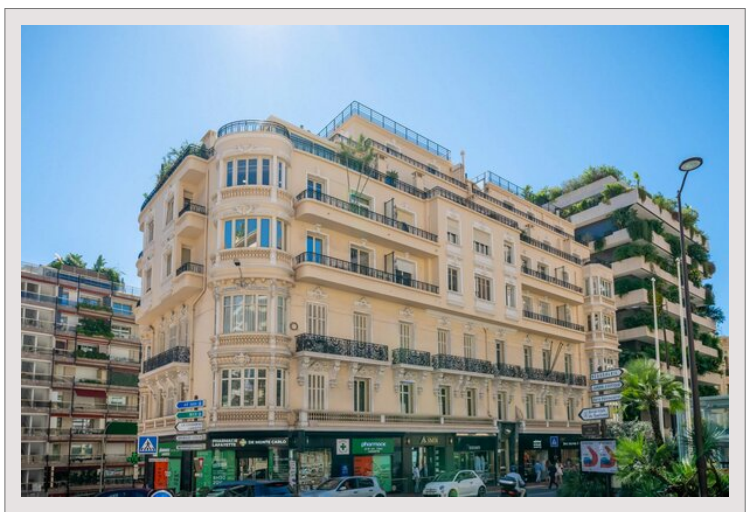
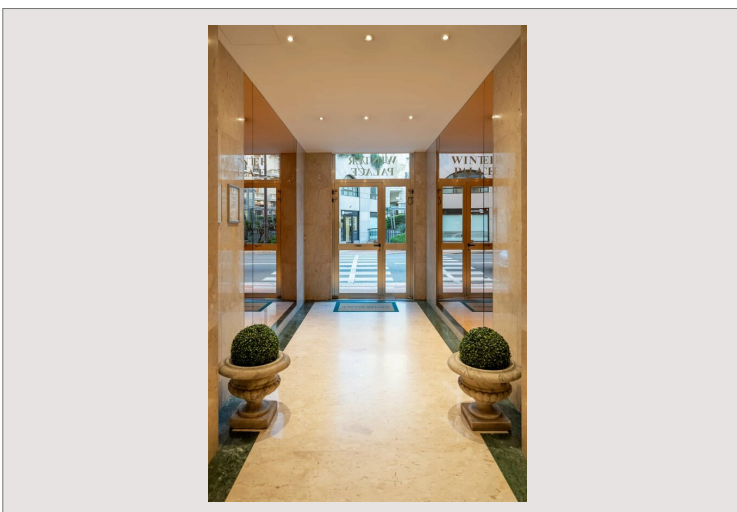
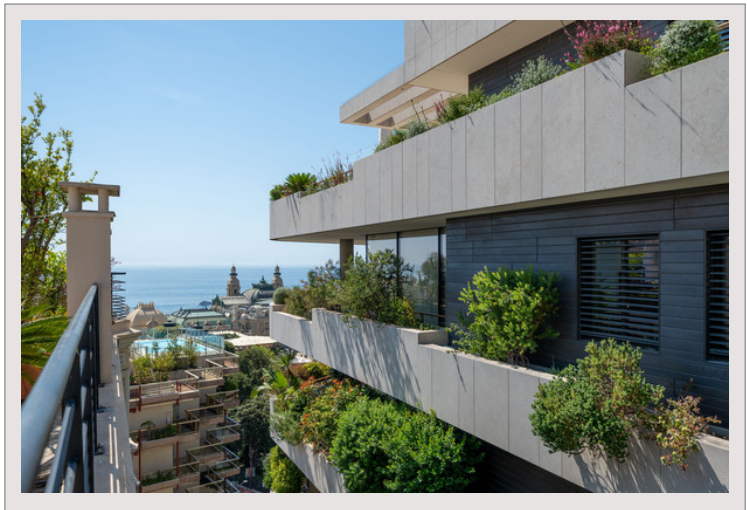
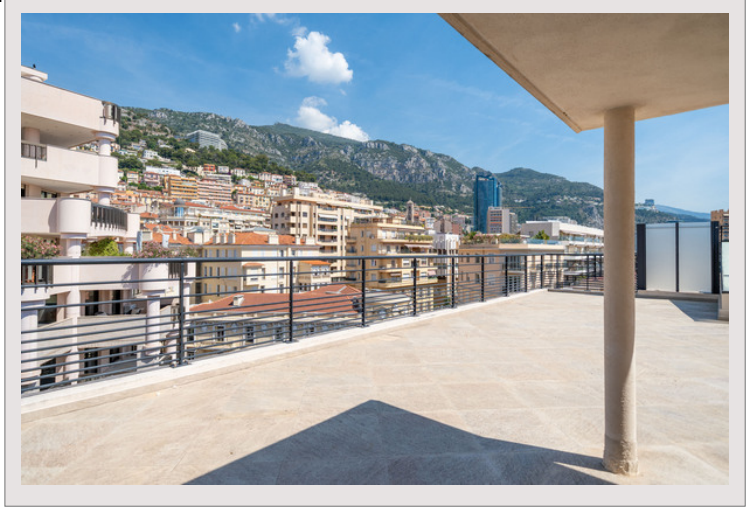
WINTER PALACE - Carré d'Or - Duplex Penthouse with Exceptional Renovation Potential



WINTER PALACE - Carré d'Or - Duplex Penthouse with Exceptional Renovation Potential



WINTER PALACE - Carré d'Or - Duplex Penthouse with Exceptional Renovation Potential



WINTER PALACE - Carré d'Or - Duplex Penthouse with Exceptional Renovation Potential

