

LARGE TWO-ROOM OFFICE ON THE PORT OF FONTVIEILLE - RESIDENCE "LE

Rental Monaco

BOTTICELLI"
Sole agent

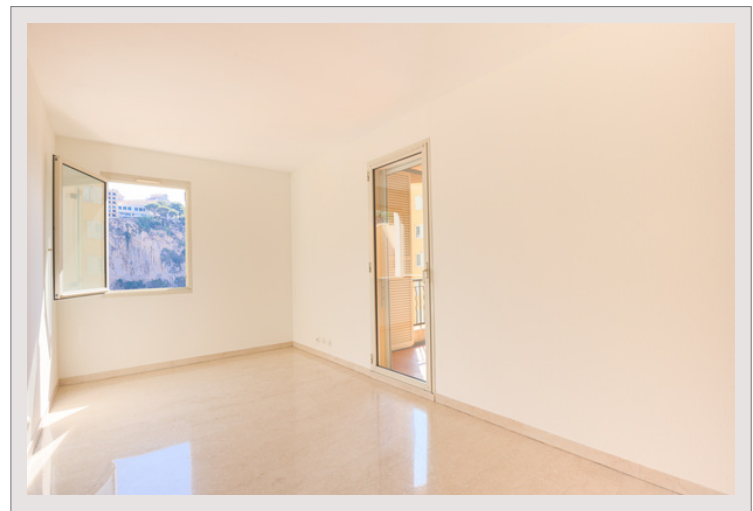
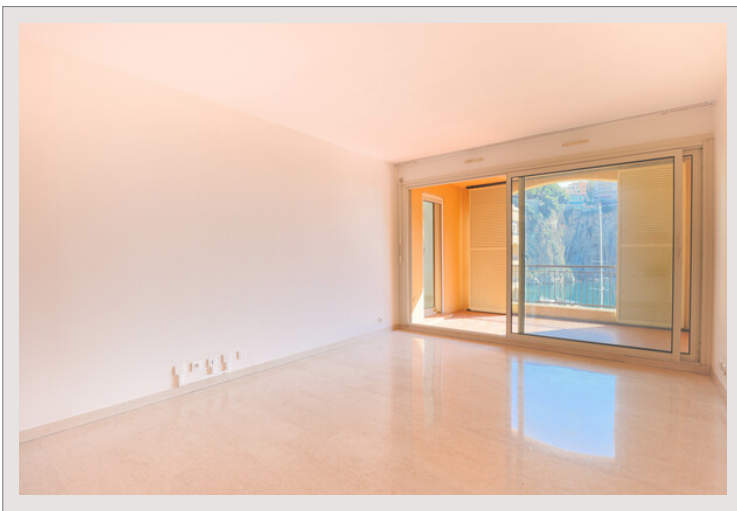
5 600 € / month

+ Service charges : 350 €

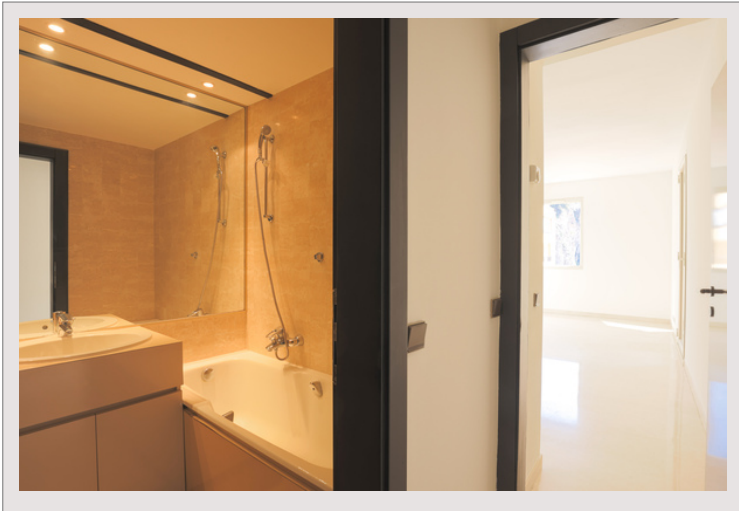
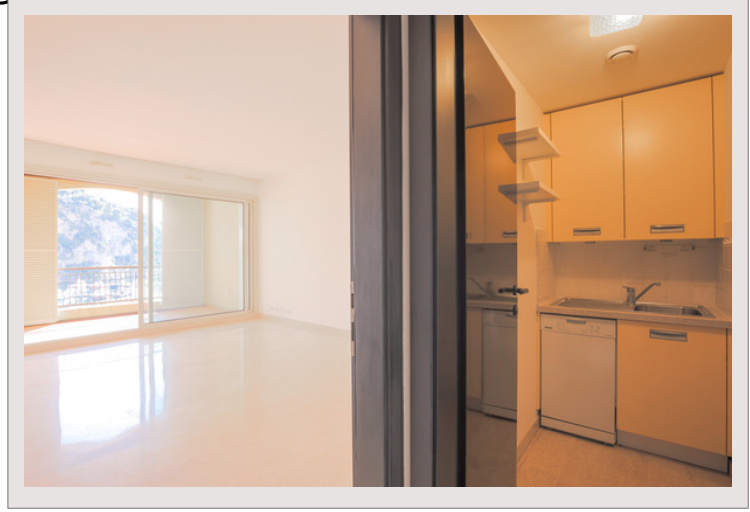
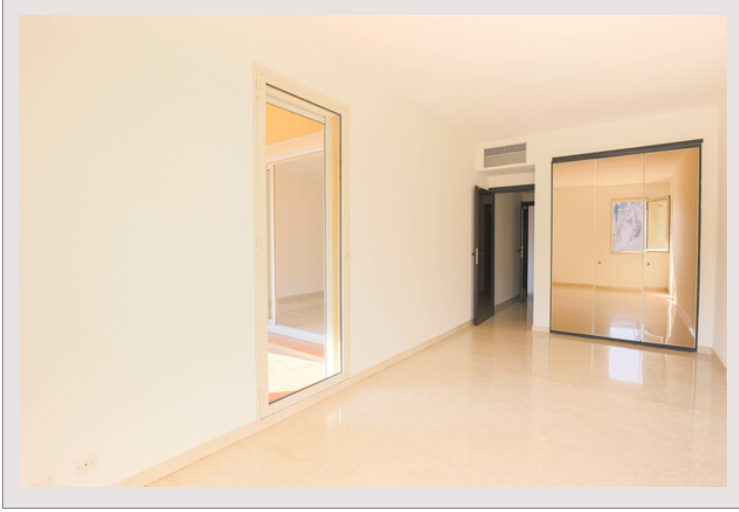
Nice two-room office with beautiful terrace overlooking the Place du Quai Jean-Charles Rey, the port of Fontvieille and the sea. Quiet in the heart of the Fontvieille district is close to all amenities and many restaurants. The property includes a large cellar and a parking space.

Product type	Office	Num rooms	2
Total area	76 m ²	Num parking	1
Living area	67 m ²	Num cellars	1
Terrace area	9 m ²	Building	Botticelli
View	Sea view and port Fontvieille	District	Fontvieille
Floor	4	Release date	Now
Usage mixte	Yes		

Spacious office with a nice view of the port of Fontvieille, located in the residence of the Botticelli



LARGE TWO-ROOM OFFICE ON THE PORT OF FONTVIEILLE - RESIDENCE "LE BOTTICELLI"



LARGE TWO-ROOM OFFICE ON THE PORT OF FONTVIEILLE - RESIDENCE "LE BOTTICELLI"

