

Fontvieille - Seaside Plaza - 677 sqm

For sale Monaco

52 650 000 €

Product type	Apartment	Num rooms	5+
Total area	677 m ²	Num bedrooms	7
Living area	462 m ²	Num parking	3
Terrace area	215 m ²	Num cellars	1
Garden area	677 m ²	Building	Seaside Plaza
View	Unobstructed view	District	Fontvieille
Condition	Good condition		

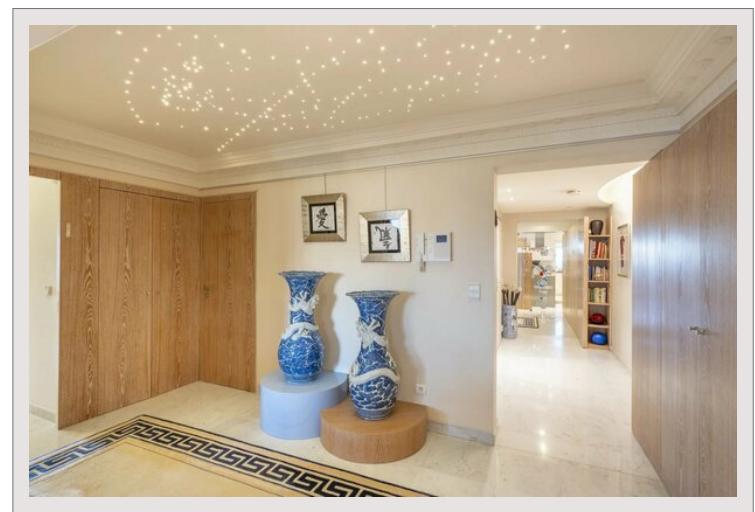
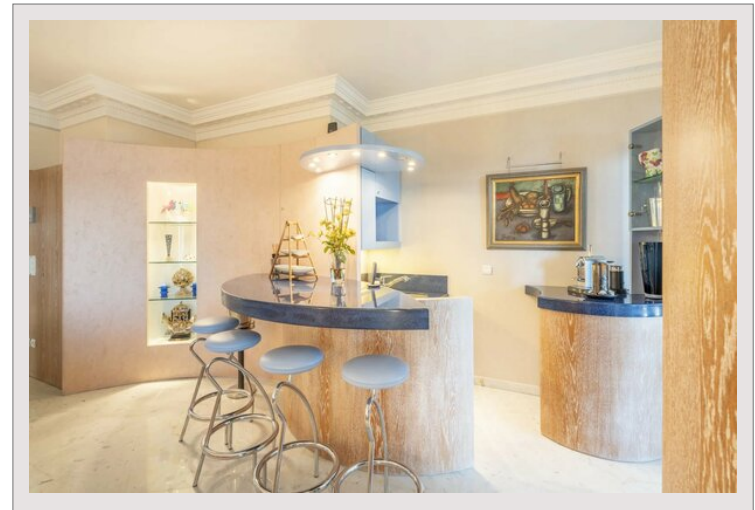
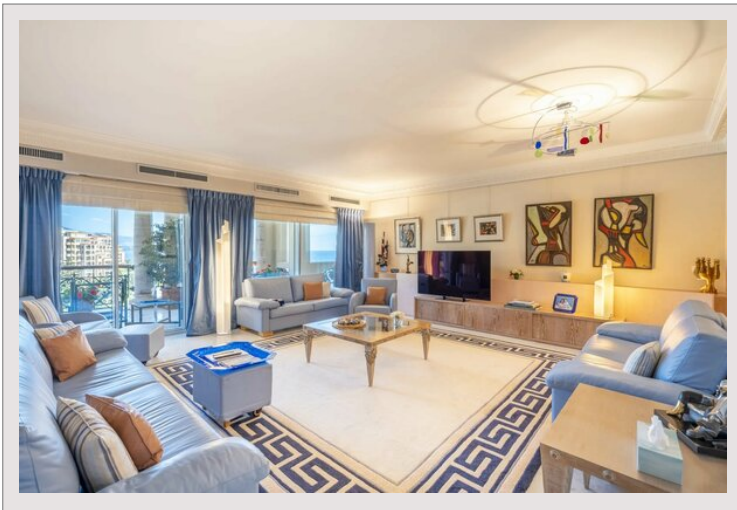
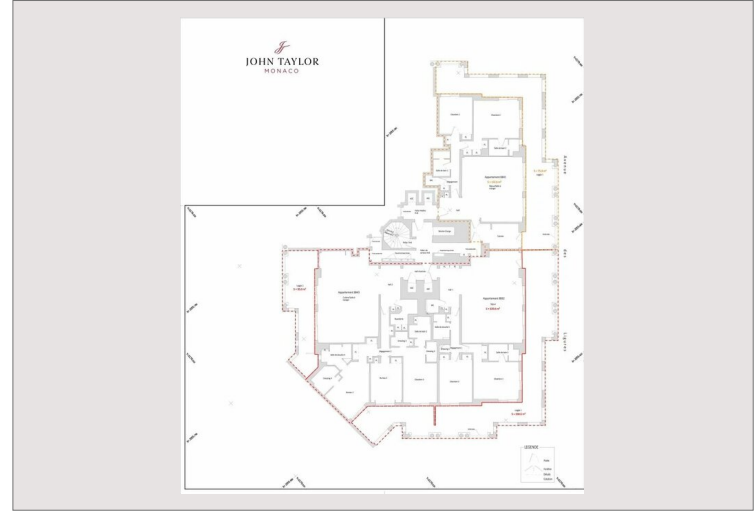
Nestled in a privileged seafront position, these two sumptuous flats, ready to be merged, stand proudly on the same floor of one of Monaco's most prestigious addresses: the luxurious Seaside Plaza. This exceptional residence offers a range of high-end facilities, including a state-of-the-art gym, two sparkling swimming pools, vigilant security and a concierge service at the cutting edge of excellence.

This unique opportunity offers the chance to unite these two architectural gems to create a space of remarkable scale, offering breathtaking panoramic views of the Mediterranean Sea, stretching majestically from Italy to Cap Ferrat. Enjoy a triple exposure, bathed in light, facing east, south and west, and benefit from the ultimate luxury of a private lift.

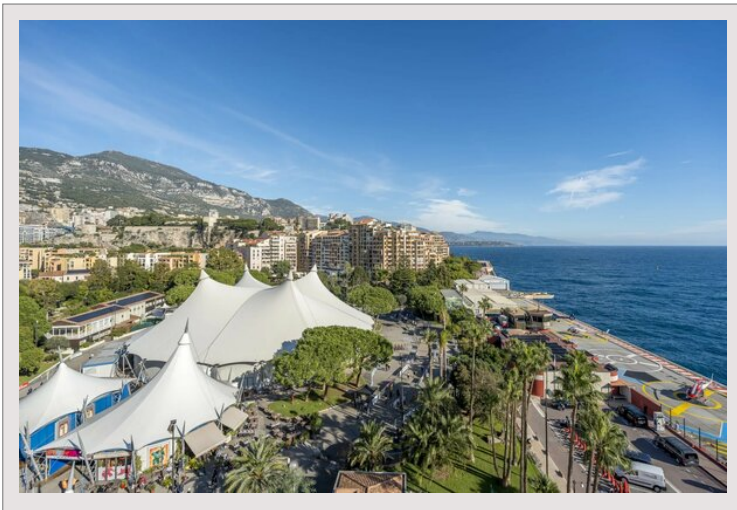
Covering an impressive surface area of 677 m², these two exceptional residences are in impeccable condition and are currently distributed as follows:

A spacious 330 m² flat, with five sumptuous bedrooms, four opulent bathrooms, two vast and refined lounges, an elegant dining room, a generous kitchen and extensive 140 m² balconies offering direct access to a sun terrace. A second flat, with two refined bedrooms, spans 132 m² and offers two luxurious bathrooms, a large living room bathed in light, a carefully equipped kitchen and a spacious 75 m² loggia, ideal for relaxing and enjoying the view. This exceptional property is complemented by three private cellars and three exclusive parking spaces, adding a further touch of comfort and prestige to this prestigious address.

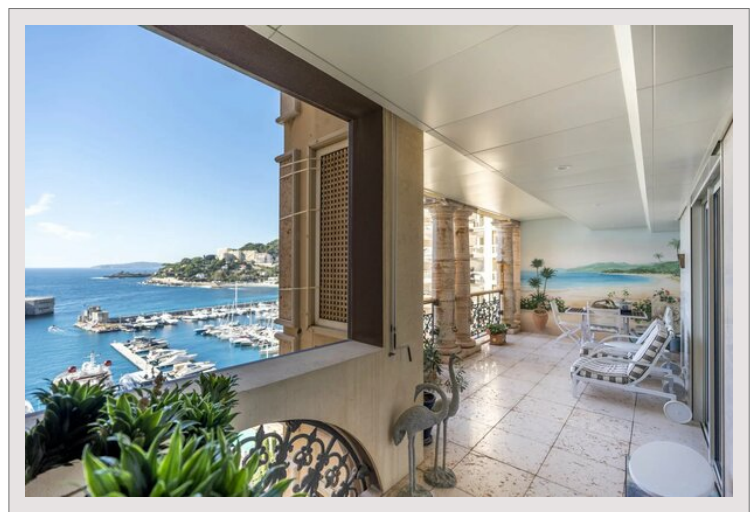
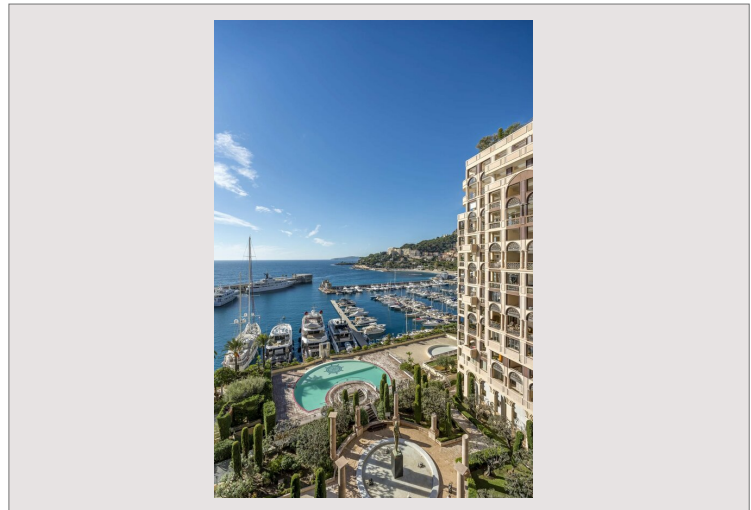
Fontvieille - Seaside Plaza - 677 sqm



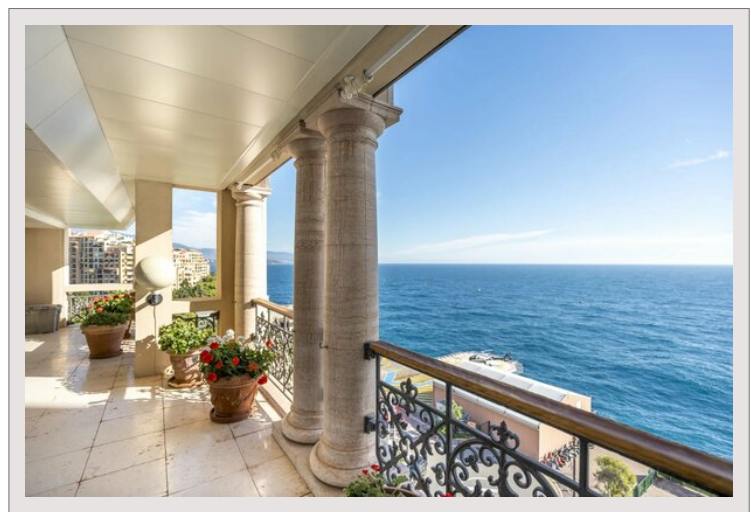
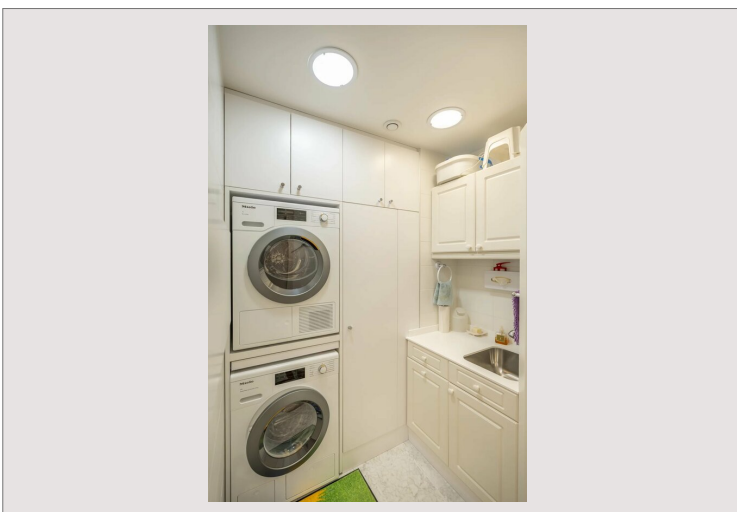
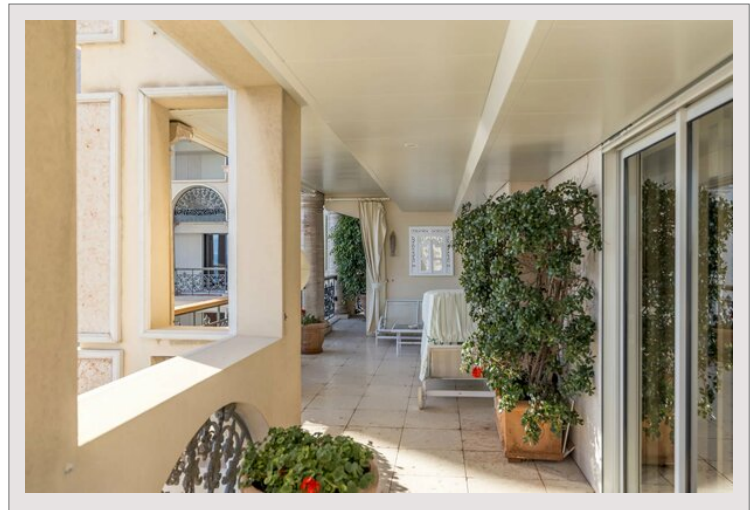
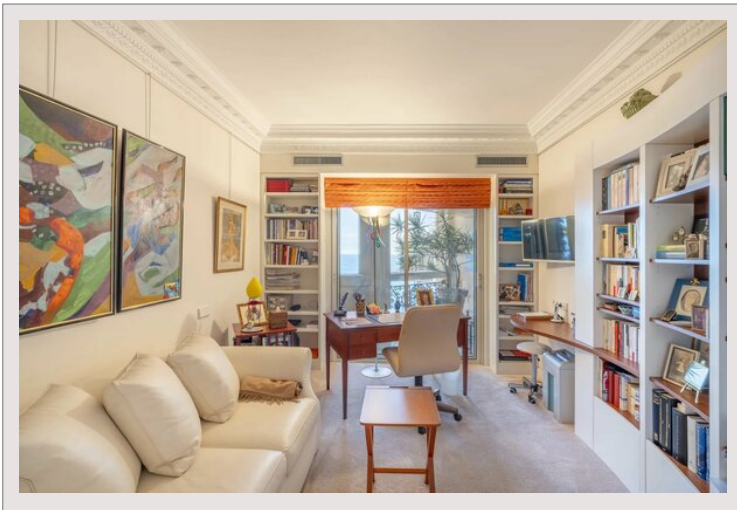
Fontvieille - Seaside Plaza - 677 sqm



Fontvieille - Seaside Plaza - 677 sqm



Fontvieille - Seaside Plaza - 677 sqm



Fontvieille - Seaside Plaza - 677 sqm

