

Harbour Lights Palace: Amazing High End 3 Bedroom Apartment with Panoramic View & Parking Space

For sale Monaco **11 500 000 €**

The Harbour Lights Palace is a high standing residency with 24/7 Concierge and security service, offering breathtaking views on the Harbour, the Rock and Monte-Carlo. It has an easy access to the entrance of Monaco and to the Harbour on foot, which is why many residents willing to be able to walk to the Casino or to the Yacht Club will be seeking for such a location, as well as enjoying a guaranteed panoramic view.

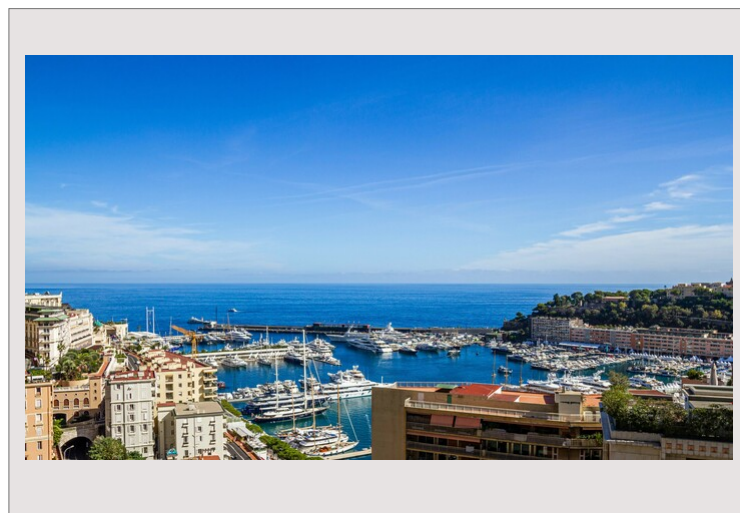
The apartment was fully refurbished with high quality materials and an incredible attention for details. It benefits from a mix of Italian marbles in the bathrooms, solid oak wooden floors in the main rooms, "Roche Bobois" furniture, as well as a high end domotic system and Bang & Olufsen technology.

The apartment comprises an entrance leading to a very spacious living and dining area opening on a large terrace with stunning views on the Harbour and the Rock, a fully equipped and separate kitchen with Miele appliances, three double bedrooms with their own built-in storage and en-suite bathrooms, one of which even has a walk-in dressing room, and a guest loo.

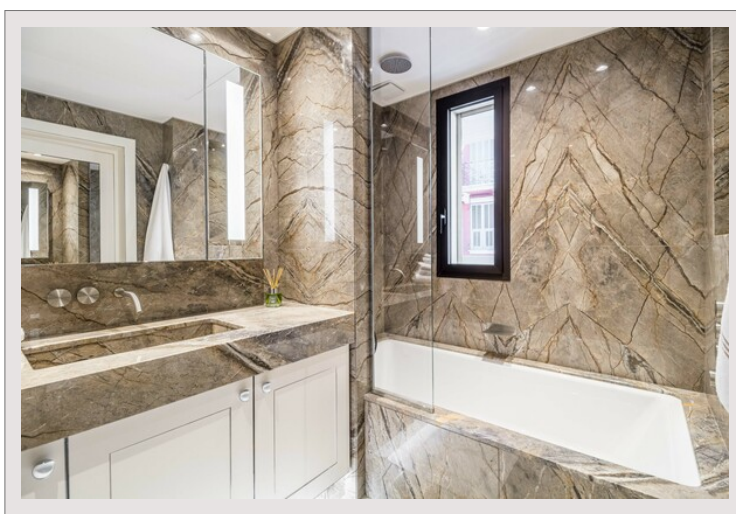
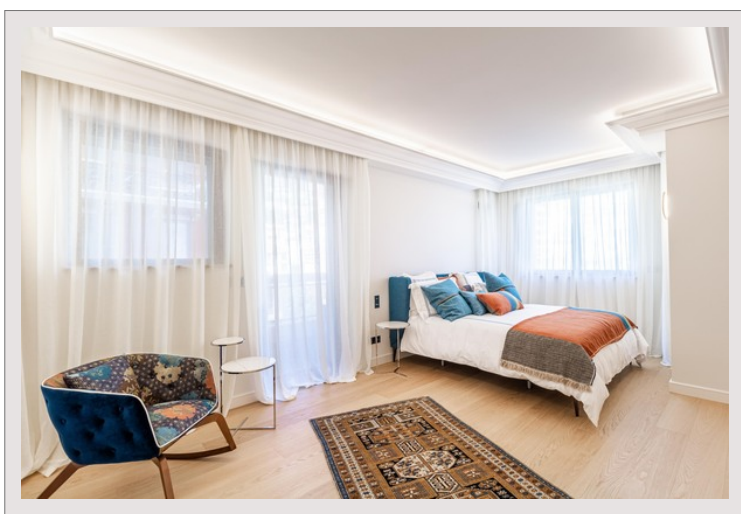
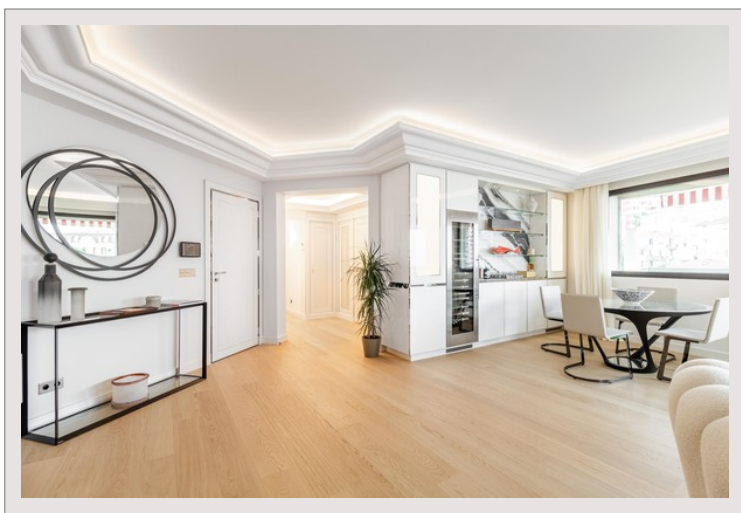
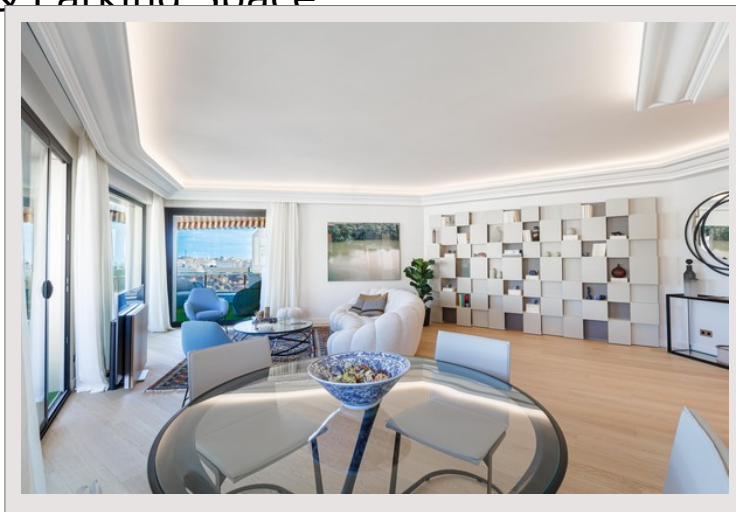
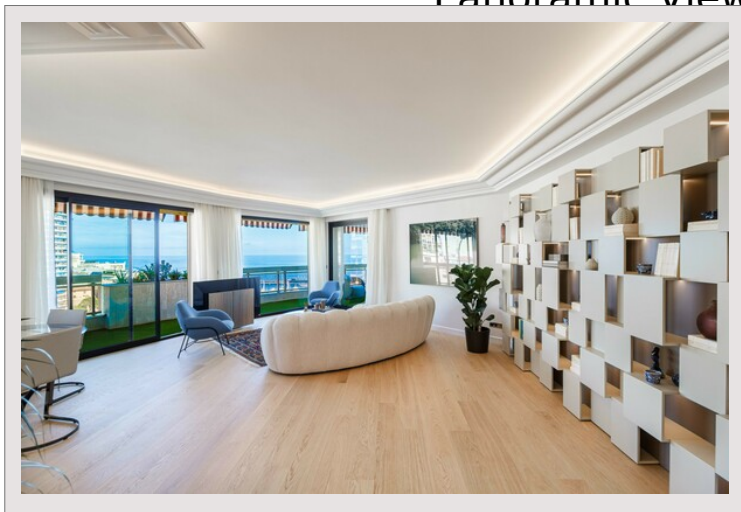
A cellar and a large parking space are included in the asking price.

A second parking space is available for €400.000.

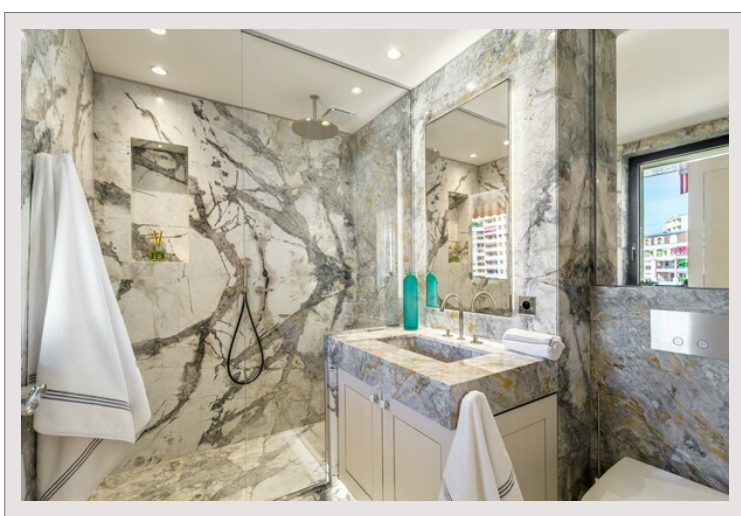
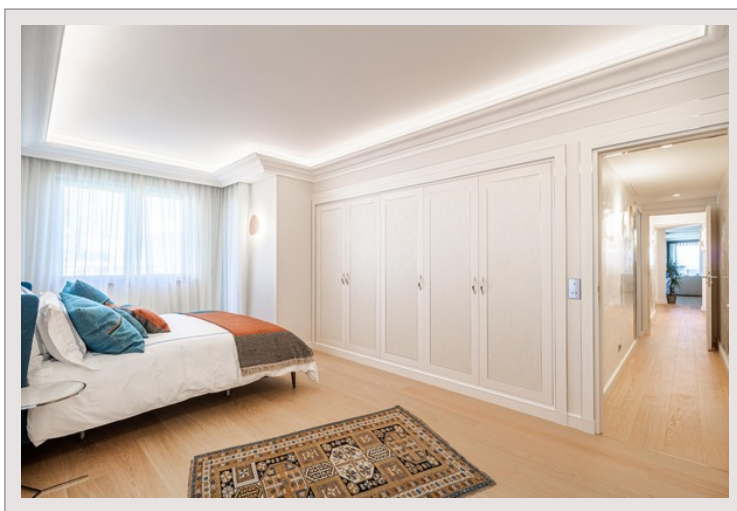
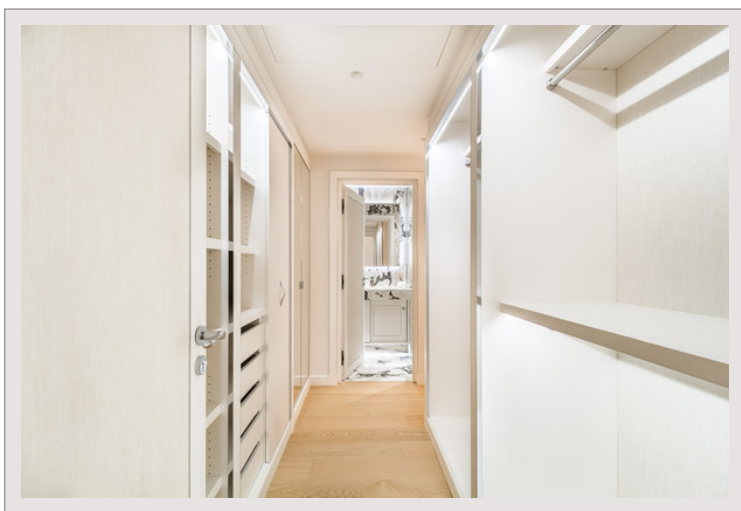
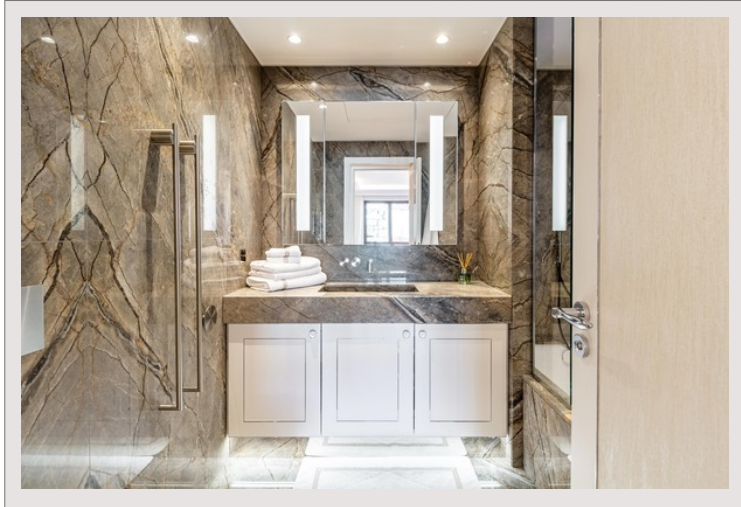
Product type	Apartment	Num rooms	4
Total area	225 m ²	Num bedrooms	3
Living area	173 m ²	Num parking	2
Terrace area	52 m ²	Num cellars	1
View	Panoramic Rock and Sea View	Building	Harbour Lights Palace
Exposure	South/East	District	Moneghetti
Condition	Luxurious amenities		



Harbour Lights Palace: Amazing High End 3 Bedroom Apartment with Panoramic View & Parking Space



Harbour Lights Palace: Amazing High End 3 Bedroom Apartment with Panoramic View & Parking Space



Harbour Lights Palace: Amazing High End 3 Bedroom Apartment with Panoramic View & Parking Space

