

## Charming 84m2 apartment in Fontvieille

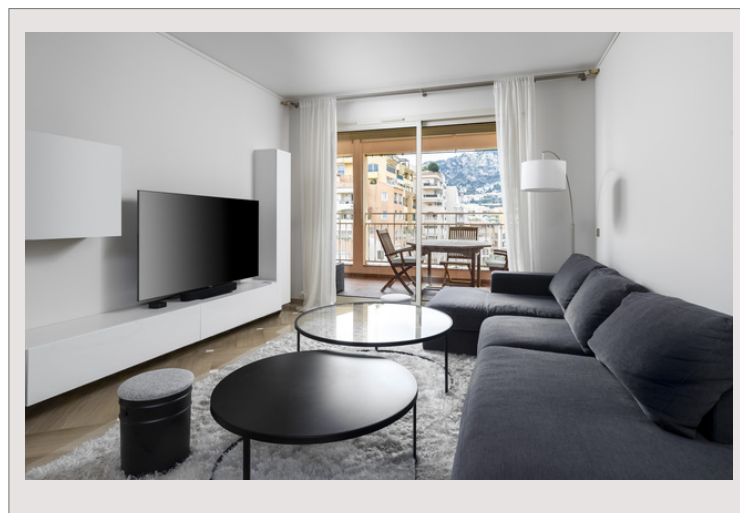
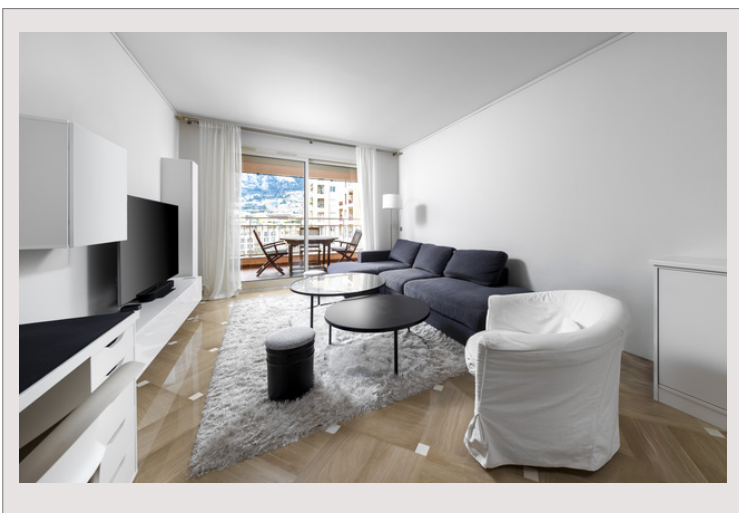
For sale Monaco

4 100 000 €

Product type	Apartment	Num rooms	2
Total area	84 m <sup>2</sup>	Num bedrooms	1
Living area	69 m <sup>2</sup>	Num parking	1
Terrace area	15 m <sup>2</sup>	Num cellars	1
View	Tête de Chien	Building	Eden Star
Exposure	West	District	Fontvieille
Floor	7		

This 84m2 apartment features a practical interior design, that capitalises on its generous 69m2 interior space. Within the interior walls there is a spacious living area, independent kitchen, a bedroom with dressing room, a well appointed bathroom, and a guests toilet. The large glass doors in both the bedroom and living space make the most of the abundant natural light thanks to the apartment's west-facing aspect. They also open up the space to a 15m2 terrace which benefits from views across the neighbourhood and the *Tête de Chien* towering above the western side of Monaco. It is the perfect place to soak up the Monégasque morning sun before work or enjoy the remaining evening heat with a well deserved cocktail when you get back. As an addition to the apartment, the property also comes with a designated parking space (a highly coveted asset in the principality) and a cellar for some additional storage. Residents of the Eden Star building are also granted exclusive access to the swimming pool. Many residents choose Fontvieille as an escape from the central Monaco buzz, while retaining the convenience of having everything just a stone's throw away. Within minutes of your new apartment, you can enjoy the sound of azure waters lapping up against the yachts in Fontvieille Port, socialising in one of the many restaurants or bars, or simply doing your weekly shop in the large shopping centre.

The apartment offers a blank canvas for somebody to put their own stamp on it or alternatively create a lucrative rental income, given the high popularity of the neighbourhood. It is currently rented until the 31.03.2025.



## Charming 84m2 apartment in Fontvieille

