

Fontveille - Palazzo Leonardo - 8 pièces

Vendita Monaco

Tipo di proprietà	Appartamento
Superficie totale	750 m ²
Superficie abitabile	500 m ²
Superficie terrazza	250 m ²
Superficie giardino	750 m ²
Vista	Vista libera
Costi annuali	120 000 €

Prezzo su richiesta

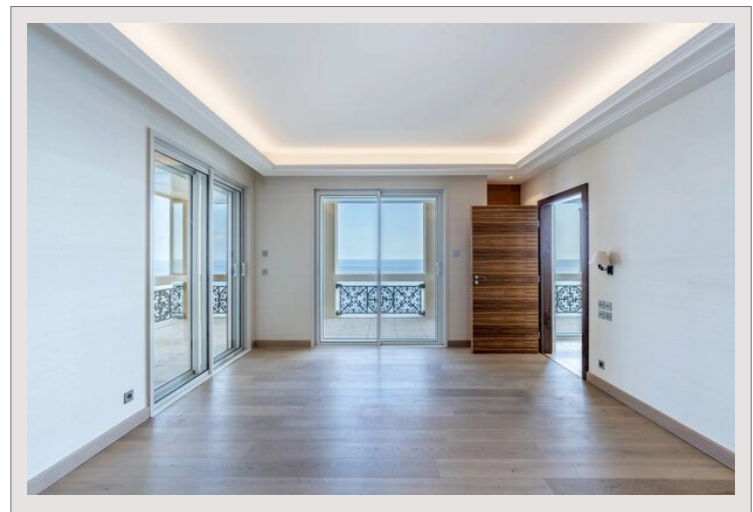
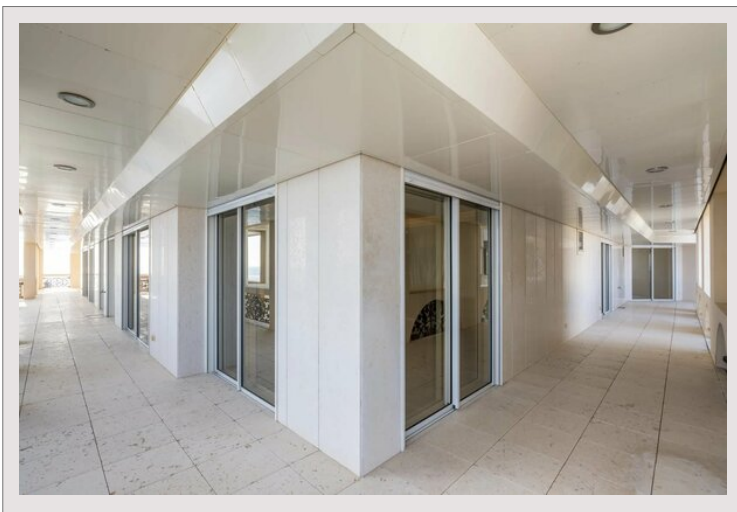
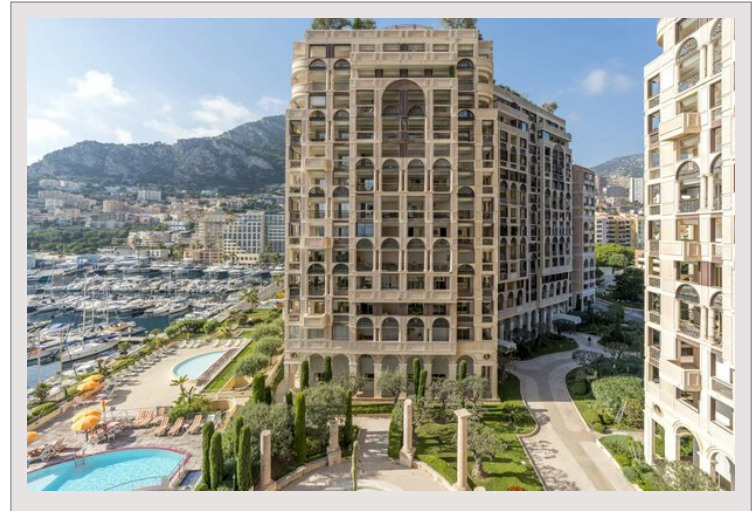
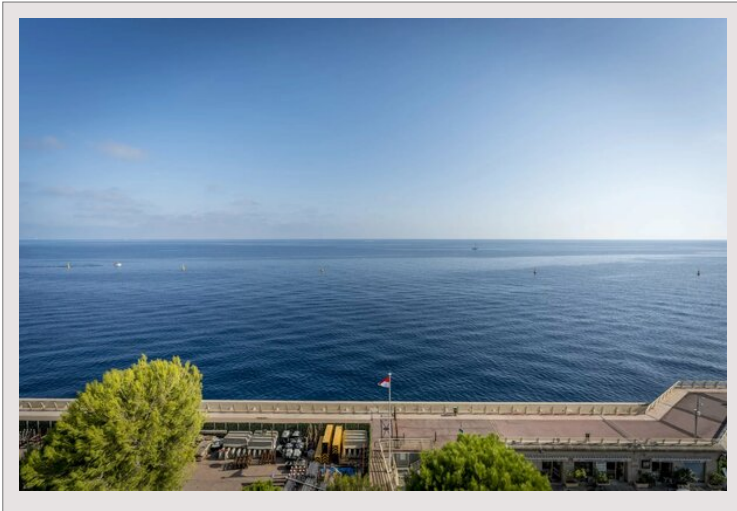
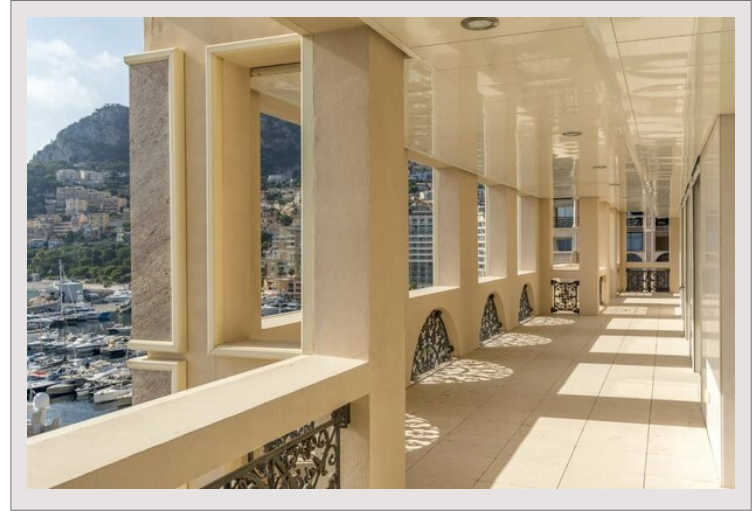
Num stanze	5+
Num camere	4
Num cantine	1
Num box	8
Residenza	Palazzo Leonardo
Quartiere	Fontveille

Posizione eccezionale a 50 m dal mare:

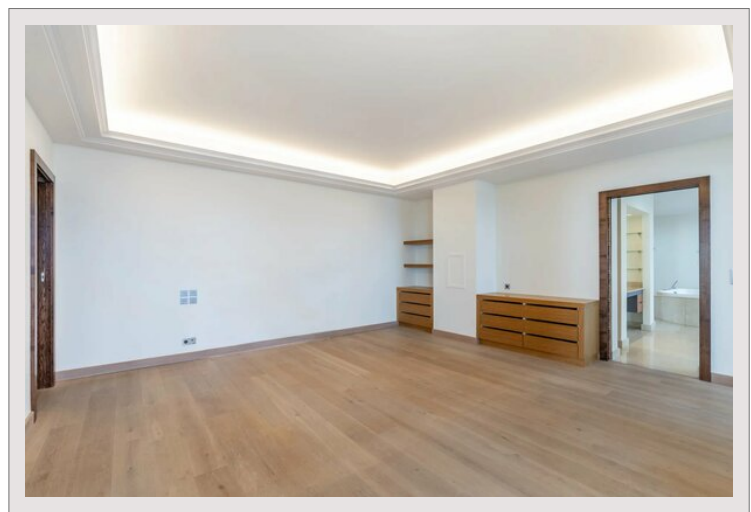
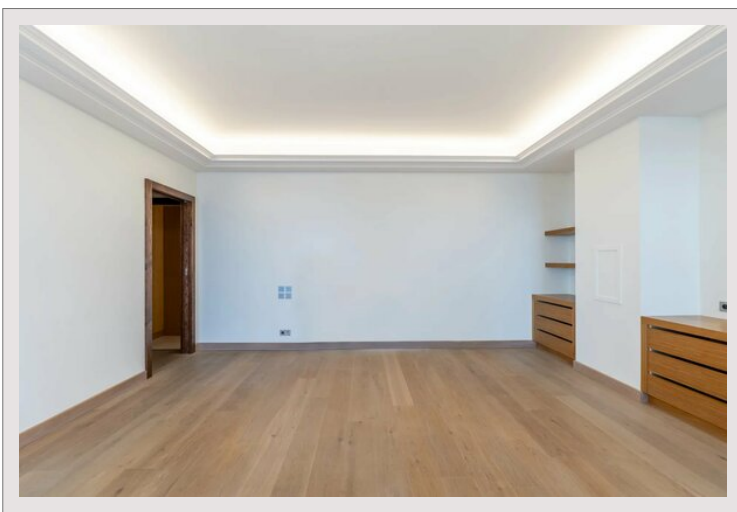
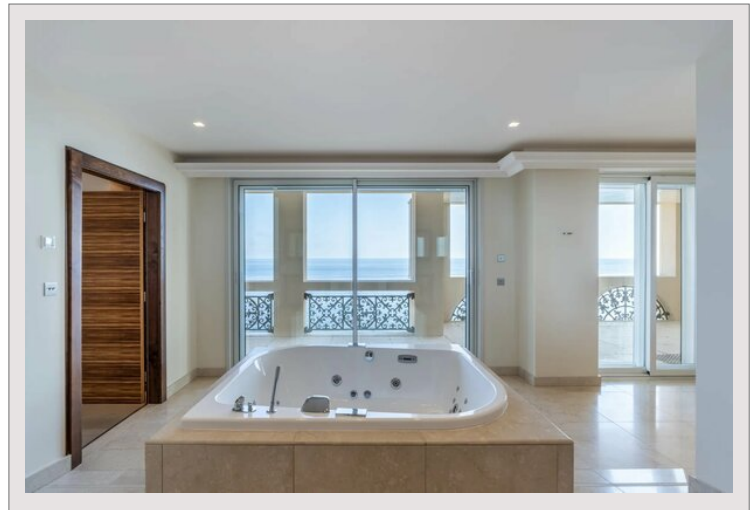
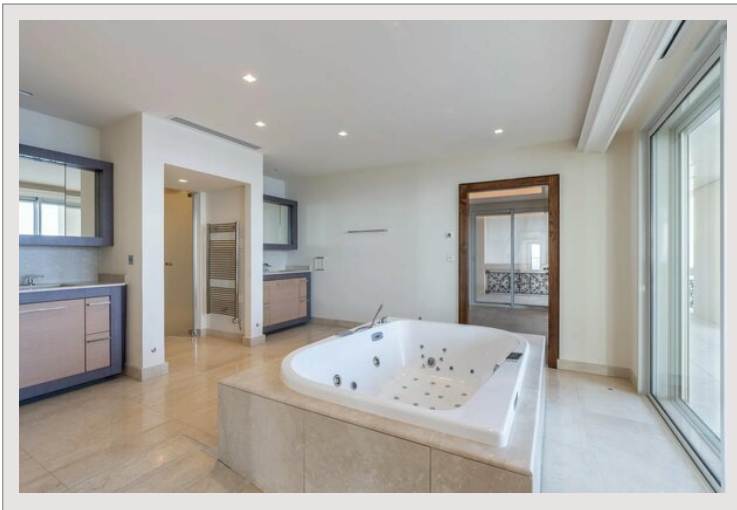
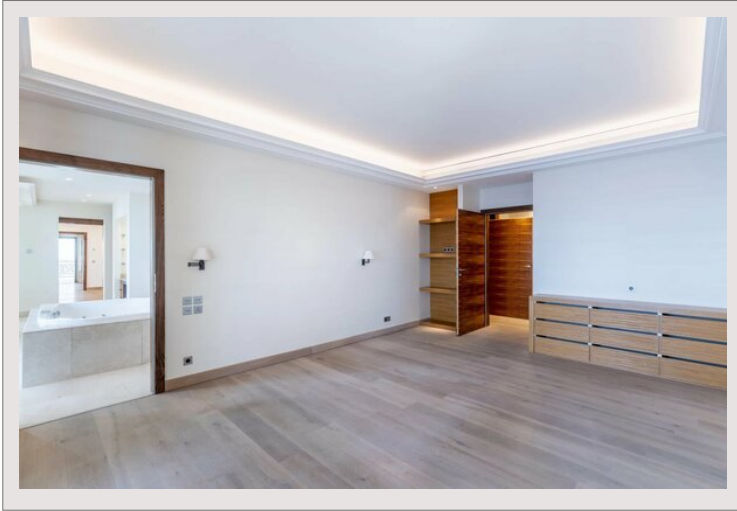
- Vista ininterrotta sul mare a 180 gradi.
- Vicino al roseto, ai ristoranti del porto di Fontveille e al supermercato Carrefour.
- L'inquinamento acustico proveniente dagli hotel è limitato grazie ai quadrupli vetri. Sono consentite vetrate aggiuntive intorno a una parte o a tutta la terrazza.
- Oltre 500 m² di superficie abitabile, 200 m² di terrazze, 8 garage, 2 cantine, 4 camere da letto, 2 salotti, 2 uffici, ...
- L'area centrale tra gli ascensori può essere privatizzata.
- Cantina climatizzata per oltre 300 bottiglie (all'interno dell'appartamento).
- Servizio di portineria 24/7.
- Accesso a piscine private (condivise con altri proprietari).



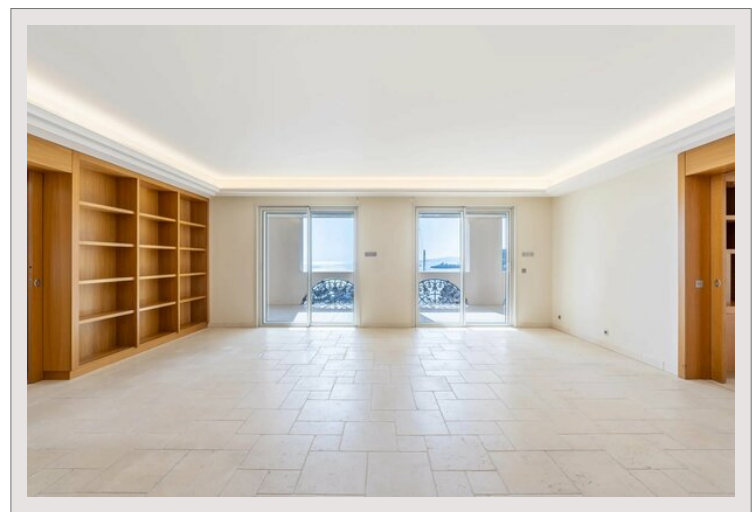
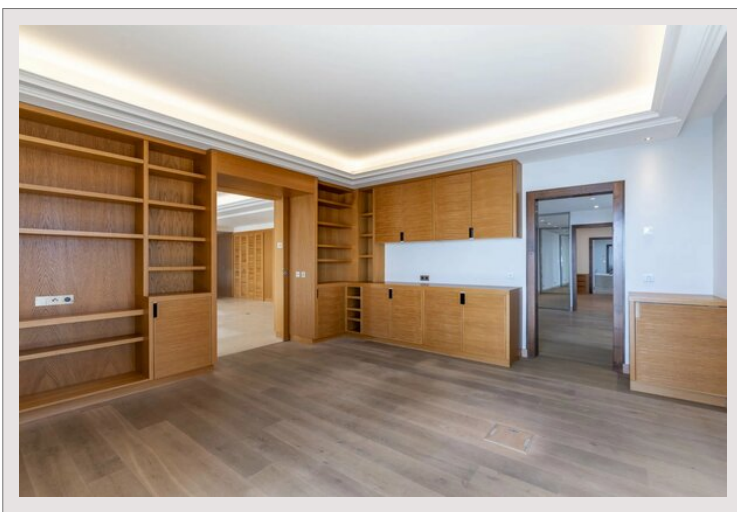
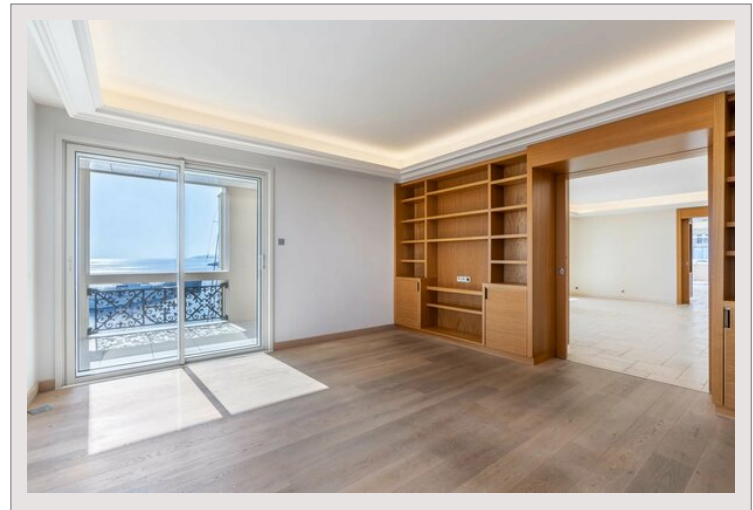
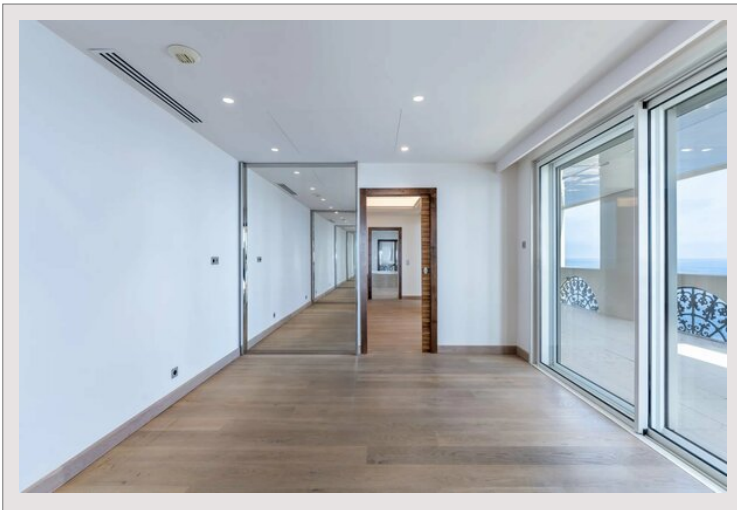
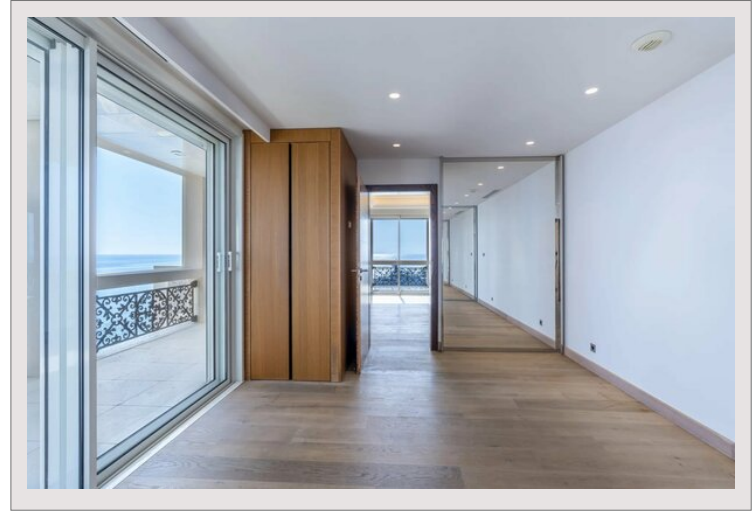
Fontveille - Palazzo Leonardo - 8 pièces



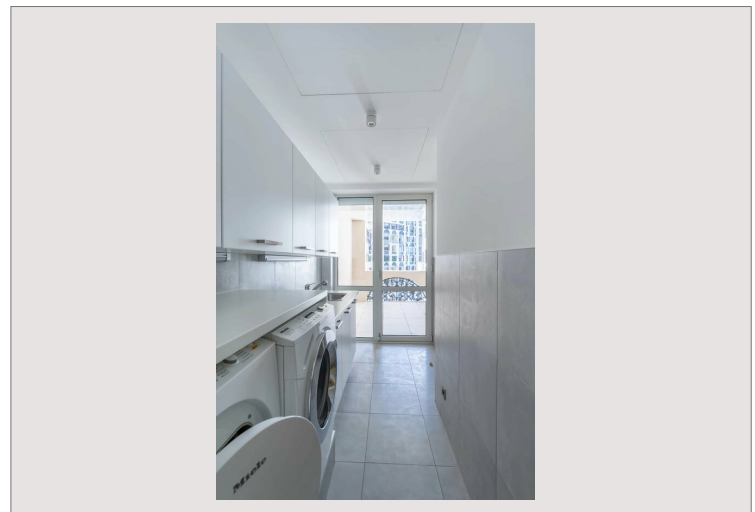
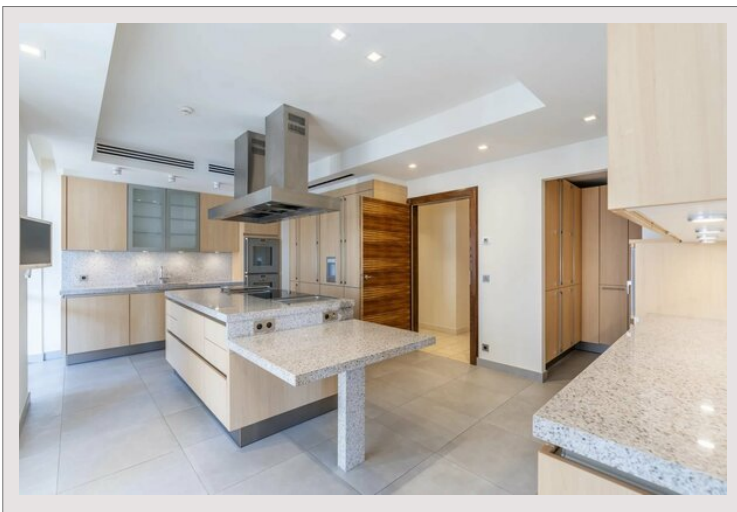
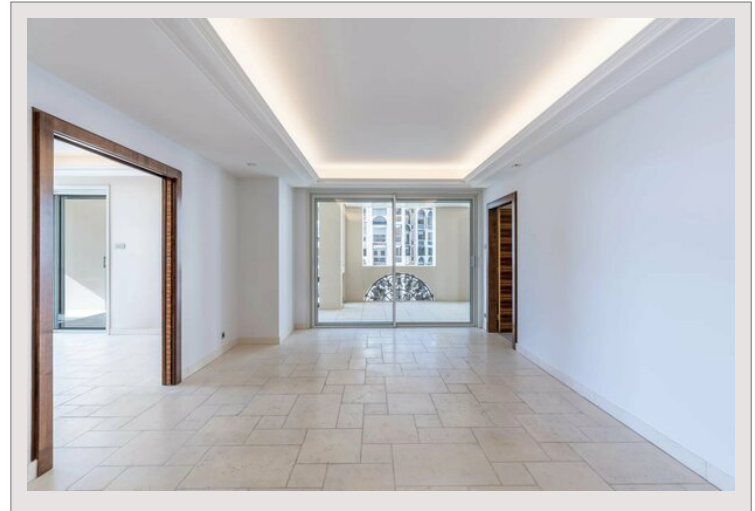
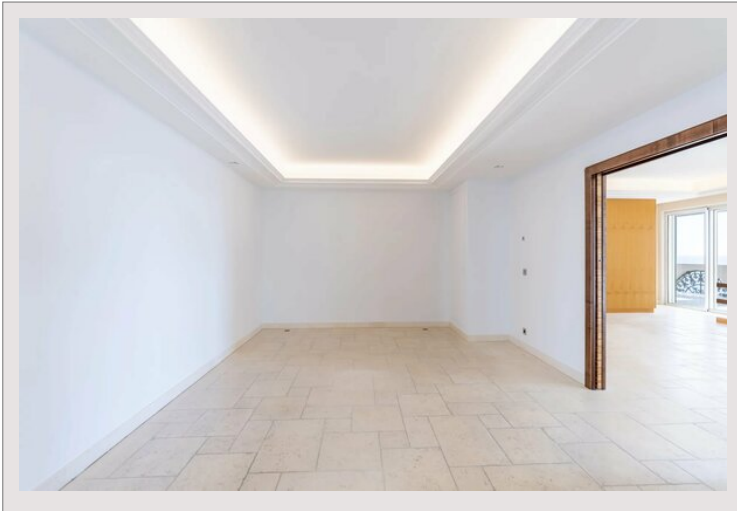
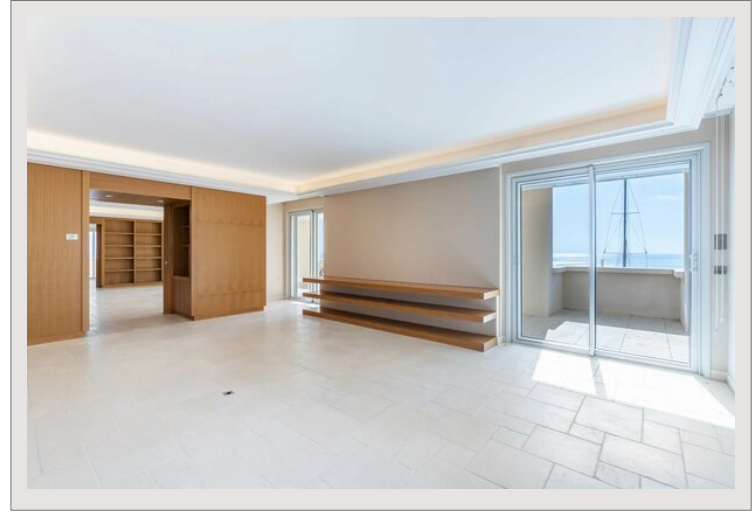
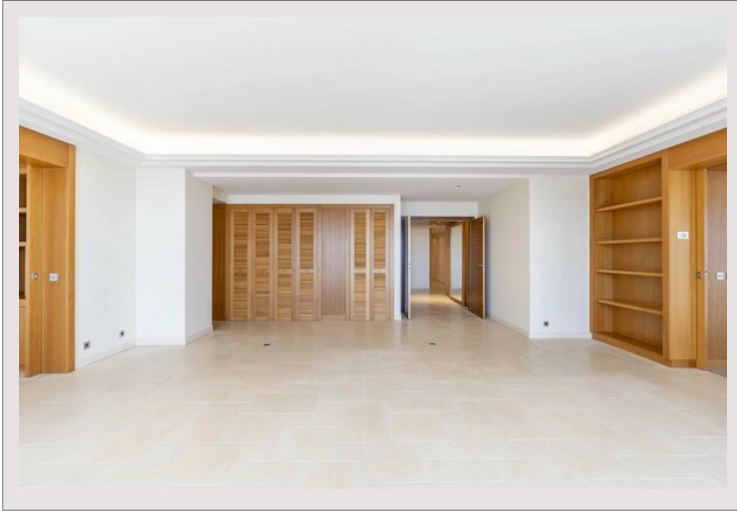
Fontveille - Palazzo Leonardo - 8 pièces



Fontveille - Palazzo Leonardo - 8 pièces



Fontveille - Palazzo Leonardo - 8 pièces



Fontveille - Palazzo Leonardo - 8 pièces

